



# Annual Report <sup>05</sup>

Tasmanian Regional Arts

## CONTENTS:

<b>PRESIDENT'S REPORT</b>	<b>2</b>
<b>EXECUTIVE DIRECTOR'S REPORT</b>	<b>4</b>
<b>ORGANISATIONAL OVERVIEW</b>	<b>5</b>
<b>2005 ACTIVITIES SUMMARY</b>	<b>7</b>
<b>TRA PEOPLE</b>	<b>8</b>
<b>2005 IN REVIEW</b>	<b>11</b>
<b>PROGRAMS</b>	<b>14</b>
<b>ARTS PLUS</b>	<b>Youth</b>
	<b>Wellbeing</b>
	<b>Community</b>
<b>ARTS 2U</b>	<b>Performing Arts</b>
	<b>Visual Arts</b>
<b>ARTS ASSIST</b>	<b>Creative Volunteering</b>
	<b>Regional Arts Fund</b>
<b>TRA ROLL OF HONOUR</b>	<b>41</b>
<b>LIST OF PARTNERSHIPS</b>	<b>42</b>
<b>LIST OF ARTISTS</b>	<b>45</b>

Tasmanian Regional Arts receives program funding from the Australian Government through the Australia Council, its arts funding and advisory body and from the Tasmanian Government through Arts Tasmania.

## CONTACT:

Lucy Kenneth

Executive Director, Tasmanian Regional Arts

PO Box 172 Latrobe 7307

Ph: 03 6426 2344 Fax: 03 6426 2889

Email: [info@tasregionalarts.org.au](mailto:info@tasregionalarts.org.au)

Web: [www.tasregionalarts.org.au](http://www.tasregionalarts.org.au)

**COVER IMAGE:** *Choices* Lindi Gee from Art Ability Exhibition 2005.

# PRESIDENT'S REPORT



## 2005: a year of consolidation alongside further expansion

Driven by Executive Director, Lucy Kenneth, we have seen a range of very successful community based arts projects and experiences generated by staff and volunteer branch members throughout the state. We welcome two new branches (Windmill Village Regional Arts Oatlands and TRA Kentish) enlarging our network to 26 branches in all - demonstrating the changing demographics within our communities and the thriving energies that continue to pulsate through all layers of our contemporary society.

Without doubt, from my perspective, the September TRA Biennial Conference entitled the REAL Event was a significant milestone in the history of our organisation. Conceived by the staff team after a suggestion from a volunteer Board member, it was co-

ordinated and managed by Cultural / Touring Officer Teresa Beck-Swindale in conjunction with Pip Stanley and Arts Deloraine. The mountain of organisation required for such a successful weekend was enormous and tribute must be paid to everyone involved.

Another highlight of the year was the visit of the Board of Regional Arts Australia, the thirteen members of which came from all states to attend a springtime meeting in Launceston. We proudly hosted the meetings at Inveresk - the impressive regional arts complex that includes the University of Tasmania Fine and Performing Arts Centres in addition to the Museum and Art Gallery building. TRA continues to be an active member of that organisation as demonstrated by the large number of Tasmanian responses received for the nationwide community consultation. The 2006 National Directions: Regional Arts publication resulted from this impressive consultation.

In 2005 TRA became the first arts organisation to become a partner of Tasmania Together. It has been worthwhile for us to consider our diverse activities within the existing framework and reflect on the future of Tasmania Together through a written submission to the review process.

An Island Life project that commenced 3 years ago reached its successful

conclusion during 2005. Initiated by former Executive Director, Siobhan Reid, it has generated many successful arts projects and we thank her most sincerely for her strategic concept development and inaugural implementation.

Branch activity has again been inspirational and one only has to refer to the statistics later in this report to appreciate the commitment, energy and passion our volunteers pour into their local activities. It is true to say that the addition of a new communities' activities grants category (CARS) to the Regional Arts Fund in Tasmania has been an exciting development and is reaping great benefits through projects in regional communities.

Jenni Sharman, appointed to the TRA staff early in the year has successfully led the Arts & Health network. Significant partnerships have been established with the Department of Health and Human Services, Local Government, arts@Work, Women Tasmania, Anglicare, Womens' Health and Housing Tasmania. There is great interest and energy in this area of arts practice and it is very pleasing to see the leading role being taken by TRA under Jenni's enthusiastic leadership.

Reports show highly successful touring program in both the Performing

and Visual Arts programs. With an increase of 17% in audience numbers for Performing Arts tours we must congratulate Teresa on her skilful management. Of significance in these statistics are the partnerships formed that enabled us to get maximum value for our touring product eg. Ten Days on the Island, Tasdance and Neil Cameron's inaugural Festival of Voices. We look forward to maintaining and developing this aspect of our activities.

*Material Girl 2005* was once more outstandingly successful. This exhibition of selected artworks by female artists continues to inspire and empower women statewide. We congratulate the State Government through Women Tasmania for its commitment to this ongoing gem of community arts access and thank the corporate sponsors who joined forces to keep it financially afloat. The *Exhibitionists*, a partnership with CAST toured artworks by practising school teachers, had an added dimension that involved training in exhibition curation. This was well received by ten schools around the state.

TRA Youth Projects have continued to forge ahead under the creative and committed direction of our Youth and Communications Officer Karlee Foster. Not only has Karlee worked tirelessly on our behalf but she has developed her own state and national profile as an innovative and competent youth arts practitioner.

Our involvement in the arts and disability sector continues to expand and flourish. The opening of the *Art Ability* exhibition at The School House, Clarence: a collaboration of Serpentine Studio, Burnie, Cosmos, Hobart and Arts Roar, Launceston gave us the opportunity to congratulate many of the artists who were able to travel to share the celebration of their impressive work.

The staff team at Head Office has expanded as needed to manage the increasing activities of the organisation. Felicity Harris joined initially as administration officer but rapidly demonstrated her considerable skills to be given the responsibility of managing the RAF program. Her competent, vibrant personality was evident at the Deloraine Conference when she became more than just a voice on the telephone to those who attended. Catherine Stark also served us well in publicity and marketing in the lead up to that event but unfortunately could not continue beyond that point owing to other work commitments. We are still hoping that in the not too distant future one of our funding bodies will recognise our desperate need in this area and make provision to enable us to make an appropriate appointment.

The revision of our constitution (a recommendation of the Matrix Review 2004) took place early in the year and altered the structure of our Board to enable wider representation from co-opted members. We were very

fortunate in securing the services of two highly regarded members of the Tasmanian community: Catherine Fernon, Community and Recreation manager, Burnie City Council (a link to local government), and our "old" friend Rick Rockliff (industry and corporate management). The complexities of modern existence have meant that teleconferences are increasingly part of our governance process and we thank Board members for making themselves available for consultation and discussion. In particular I would like to pay tribute to treasurer Steve Allen who, despite professional international commitments keeps - with the scrupulous support of finance officer Keith Duncan - a stringent eye on all our financial responsibilities and Carol Charlton (Lilydale Branch) who acts as Public Officer.

In conclusion I pay tribute to all branch members, associated personnel and our dedicated, patient and long suffering team at Head Office. To Lucy I give heartfelt personal thanks for the tireless commitment she makes on our behalf to maximise the full potential of our community based organisation. The current enhancement of its profile and status on the state and national scene is a tribute to her vision, perseverance and commitment. The future is full of promise!

LYNNE PRICE

# EXECUTIVE DIRECTOR'S REPORT



2005 was a very exciting year to be working for Tasmanian Regional Arts. We started the year with a gusto of advocacy and networking due to organisational changes at the Australia Council for the Arts, one of TRA's main funding bodies.

This came at a time when we were implementing recommendations of the organisational review conducted during 2004. The review included an in-depth evaluation of the community cultural development program and organisational structures. The review was conducted by Sydney based consultants Matrix on Board and supported by the Australia Council for the Arts and Arts Tasmania.

The review made recommendations in the areas of:

- > organisational vision, focus and structure
- > program focus and reach
- > resources, promotion and branding
- > staffing structures and remuneration, and
- > governance activities.

The review recommendations were approved by the TRA State Executive Committee in December 2004 and have been integrated into the TRA 2005/6 Business Plan. With a refreshed vision and more strategically focused programs 2005 was filled with partnership building and dynamic project activities. This annual report is filled with hundreds of fantastic activities and arts experiences conducted by TRA communities and through our head office in Latrobe. So many that I will not go into detail here but let you discover them for yourself.

I would however like to thank our funding bodies for having confidence in our long standing organisation. I would also like to pay tribute to all those dedicated volunteers who make arts magic happen every day in their local communities, especially to our hard working State Executive Committee who are always willing to think big and look beyond their local patch at the wider state and national scenes. Finally what an amazing staff we have at

TRA, we have 'team spirit' in the real sense and I feel very privileged to work with such a wonderful group of friends who like me are equally passionate about the power of the arts to enrich communities.

LUCY KENNETH

# ORGANISATIONAL OVERVIEW

## ABOUT

Tasmanian Regional Arts (TRA) is the peak organisation for arts in the community and regional arts in Tasmania. For over 60 years TRA has supported the development, presentation and promotion of the arts in Tasmanian communities. TRA represents over 1000 individual members from affiliate community arts groups (26 arts councils throughout Tasmania).

TRA is managed by a governing State Executive Committee (board) comprising regional, art form and sector representation. TRA has an administrative base in Latrobe, NW Tasmania but also has office space at the Studio, Queen Victoria Museum and Art Gallery in Launceston. Through partnerships with local government and other agencies such as community health; TRA branch activities also operate from a diverse range of artist run initiatives, office and performance spaces throughout Tasmania.

The Regional Arts Fund is an Australian Government initiative supporting the arts in regional and remote Australia and delivered in Tasmania in partnership with Tasmanian Regional Arts.

TRA also receives operational assistance from local government through in-kind infrastructure support, in particular from Latrobe and Launceston Councils (through the Queen Victoria Museum and Art Gallery).

Industry and local business provide contra support and sponsorship for specific projects. This ranges from computer equipment, office supplies and IT services to travel subsidies for young people to attend workshops.

On a regular basis TRA applies for and receives project funding from a range of government, business and philanthropic agencies in 2005 these included the Foundation for Young Australians, Women Tasmania, Tasmanian Alkaloids, The Community Support Levy and The Australia Council for the Arts.

## VISION

*To excite and inspire Tasmanian communities through arts, cultural participation and experience*

## PROGRAMS

### Arts Plus

Community based arts

### Arts 2U

Tours - Visual & Performing arts

### Arts Assist

RAF Grants & Training

# GOALS

## ARTISTIC

A vibrant, distinctive and nationally competitive CULTURAL PRACTICE in regional Tasmanian communities through a focus on:

- > employment of regional arts professionals,
- > training, skills and professional development,
- > innovative, contemporary and quality arts,
- > critical dialogue and debate,
- > infrastructure development for regional arts initiatives.

## AUDIENCE

Strong CULTURAL ENGAGEMENT in regional Tasmanian communities through a focus on:

- > audience development,
- > member and affiliate development,
- > supporting volunteers,
- > network guidance, and
- > partnership building

## FINANCIAL

Continued ORGANISATIONAL FINANCIAL capability for Tasmanian Regional Arts through a focus on:

- > negotiation of recurrent support agreements,
- > increasing local government support,
- > fundraising strategies, and
- > responsible financial practice.

## ACCESS

Increased CULTURAL ACCESS for all members of regional Tasmanian communities through a focus on:

- > regional and isolated youth,
- > leadership in the arts + health sector,
- > developing the arts ability sector,
- > arts inclusion in local government planning,
- > support for community based arts projects.

## OPERATIONS

Appropriate ORGANISATIONAL GOVERNANCE mechanisms at Tasmanian Regional Arts are responsible, accountable and sustainable through a focus on:

- > responsive business planning,
- > improving governance practices,
- > professional staffing structure,
- > risk minimisation

# ACTIVITIES SUMMARY

## TRA NETWORK

Branches	24
Members	1,448

## MEETINGS

State Executive	6
TRA network	209
Average per network meeting	7
Total members at network meetings	187

## NEWSLETTERS / PUBLICATIONS

Regional Arts Wrap - e bulletin	8
Circulation	500+
Tactics Magazine	3
Circulation	1400
TRA Network Newsletters	71

## EVENTS

TRA workshops and forums	38
TRA Tours	79
TRA Network Events	602

## AUDIENCE

Performing Arts Tours	8,109
Visual Arts Tours	47,408
TRA network events	30,847
Regional Arts Fund	14,430
TOTAL Audience	101,344

## PARTICIPANTS

TRA workshops and forums	737
Artists all activities	659
TRA Network Volunteer Hours	19,883

## PARTNERSHIPS

Organisational Partnerships all activities	335
--	-----

# TRA PEOPLE

## STATE EXECUTIVE

### President

Lynne Price

### Treasurer

Steve Allen

### Public Officer

Carol Charlton

### Northern Region

Launceston      Margaret Barlow

### North West Region

Mersey      Rick Rockliff

### Southern Region

Derwent Valley      Jennie Gorringe

### East Coast

Great Oyster Bay      Jennifer Lathwell >05  
Donnalee Young <05

### West Coast

Bev Cannell

### Co-opted Representatives

Local Govt      Catherine Fernon

## STAFF

### Executive Director

Lucy Kenneth

### Cultural/Touring Officer

Teresa Beck-Swindale

### Network Development Officer

Jenni Sharman

### Youth / Communications Officer

Karlee Foster

### Finance Officer

Keith Duncan

### Administration Officer

(<July 05) Renae Walsh

### Grants / Administration Officer

(>July 05) Felicity Harris

### Marketing Officer

(June-Aug 05) Catherine Stark

### Work Experience Placement

Ngairé Powell (Marist Regional College)

## STATE NETWORK

### Arts Deloraine

President      Kim Clark  
Vice President      Annie Robinson  
Secretary      Pip Stanley  
Treasurer      Harry Schrepfer

### Artscape West Tamar

President      John Forbes  
Vice President      Justine Vaughan  
Secretary      Justine Vaughan  
Treasurer      Ruth Perkins

### Bruny Island Arts Inc

President      Megan Weston  
Secretary      Allegra Biggs-Dale  
Treasurer      Tony Korab

### Burnie Arts Council

President      Lynne Price  
Vice President      Pam Thorne  
Secretary      Noelene Hurkett  
Treasurer      Lyn Smith

### Circular Head Regional Arts

President      Heidi van Rijswijk  
Vice President      Julie Caldwell  
Secretary /      Georgina Laan  
Treasurer      Fran Joyce

### Cygnets Community Arts Council

President      Nikki den Exter  
Vice President      Catherine Shields  
Secretary      Anna Spinaze  
Treasurer      Chris Littlejohn

**Derwent Valley RATS**

President Gillem Reid  
 Vice President Natasa Milenovic  
 Secretary Kylie Eastley  
 Treasurer Annie Beecroft

**East Derwent Arts Council**

President Jennifer Line  
 Secretary Tracy Cockburn  
 Treasurer Nicole Johnson

**Far South Regional Arts**

President Wren Fraser Cameron  
 Vice President Caroline Amos  
 Secretary Jen Hadaway  
 Treasurer Janet Whitlow

**Flinders Island Regional Arts**

President Peter Reid  
 Vice President John Hizzard  
 Secretary Annabel Apps  
 Treasurer Tim Moulten

**Grassy Bottom Regional Arts**

President Robyn Oh  
 Vice President Eo Greensticks  
 Secretary Rachael Harvey  
 Treasurer Lianne Goldsmith

**Great Oyster Bay Regional Arts**

President Doreen Steele  
 Vice President Rob Osbourn  
 Secretary Jenifer Crawford  
 Treasurer Ellen Halligan

**Greater Green Ponds Regional Arts**

President Catherine Johnson  
 Vice President Tony George  
 Secretary Chris Harman  
 Treasurer Philip Wright

**King Island Arts Council**

President Rosemary Hallett  
 Vice President Bobby Flack  
 Secretary Sharon Johnson  
 Treasurer Terry Rhodes

**Launceston Arts Council**

President Jacqueline Home  
 Secretary Margaret Barlow  
 Treasurer Andrea Radford

**Leven Regional Arts**

President Lee Cole  
 Vice President Stewart McNear  
 Secretary Adrienne Krist  
 Treasurer Lee Cole

**Lighthouse Regional Arts**

President Liz Broomhall  
 Vice President Lorraine Wootton  
 Secretary Bronwyn Gardiner  
 Treasurer Gillian Beare

**Lilydale Regional Arts**

President Jillian Weston  
 Vice President Carol Charlton  
 Secretary Frea Peschar  
 Treasurer Glenys Haworth

**Macquarie**

President Gary Price  
 Vice President Maryanne Orchard  
 Secretary Maryanne Orchard  
 Treasurer Gary Price  
 Christine Davidson

**Mersey**

President Renae Walsh  
 Vice President Bron Dickinson  
 Secretary Elizabeth Gleeson  
 Treasurer Bill Gleeson

**NERA (North East Regional Arts)**

President Virginia Gangell  
 Vice President Sandra Fox-Spencer  
 Secretary Isobel Telford  
 Treasurer Isobel Telford

**Out On A Limb Regional Arts**

President James Parker  
 Vice President Mukula McKenzie  
 Sue Ross  
 Secretary Trisha Parker  
 Treasurer Graeme Foster

**Southern Beaches Regional Arts**

President Nick Hall  
 Vice President Liz Francis  
 Secretary Kathy Hall  
 Treasurer Kathy Hall

**TRA - Kentish**

President Angela Barrington  
 Vice President Michael Taylor  
 Secretary Michelle Miller  
 Treasurer Anne Taylor

**West Coast Regional Arts**

President Peter Winskill  
 Vice President Jon Jarvis  
 Barbara Boyle  
 Secretary Bev Cannell  
 Treasurer Dawn Bishop

**Windmill Village Regional Arts**

President Jeffrey Algar-Atkinson  
 Vice President Jim Griffiths  
 Secretary Diana Langley  
 Treasurer Jan Norwood

**Organisational Members**

Drama Tas  
 Interweave Arts Association  
 Manic Productions  
 Lilydale Players  
 Ringarooma Players (Theatre Co)  
 Pioneer Hall Committee  
 Devonport City Council  
 Meander Valley Council  
 Stitching and Beyond  
 Hobart Playback Theatre  
 Anglicare  
 Slipstream Circus

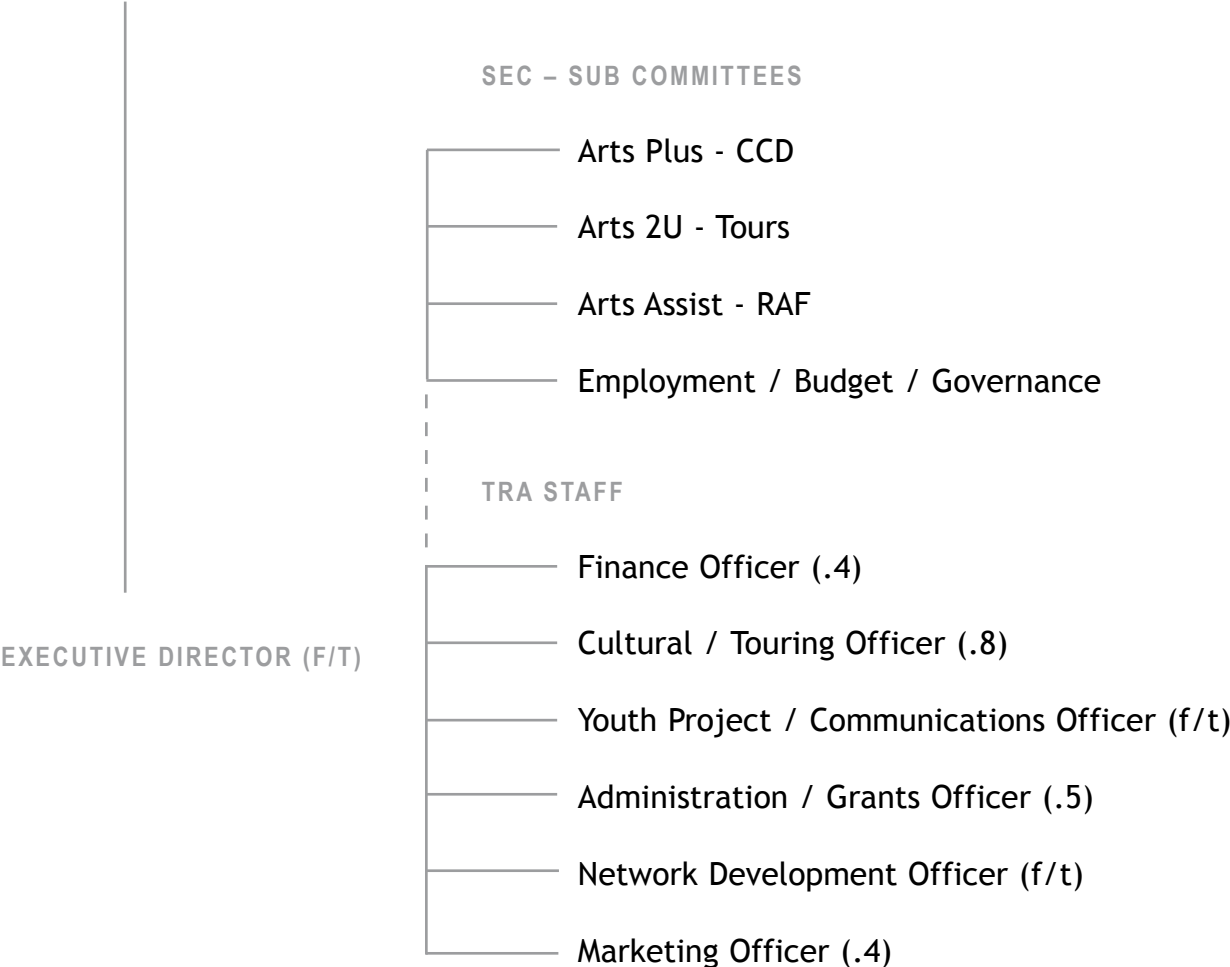
**Life Members**

Clive & Lila Robertson  
 Tony & June King  
 Dr. H D O'Brien  
 Pat Hull  
 Marjorie Luck  
 Glynis Flower  
 Chip Wardale  
 Jacqueline Horne  
 Rick Rockliff  
 Bron Dickinson  
 Pat Grey  
 Hugh and Joan Hiscutt

# ORGANISATIONAL STRUCTURE

TRA NETWORK  
Community based arts groups  
26 state-wide / 1000+ members

## STATE EXECUTIVE COMMITTEE



# 2005 IN REVIEW

## NATIONAL CONSULTATION

In 2005 through Regional Arts Australia, TRA took part in perhaps the most comprehensive ever consultation with country Australians concerning the nature, challenges and opportunities of their work in, and aspirations for, the arts in their communities. The consultation was conducted through questionnaires and forums with Anne Dunn compiling The Regional Arts Australia National Community Consultation Report May - July 2005.

This has resulted in 2006 National Directions: Regional Arts publication, a policy document that highlights five key priorities and 22 strategic ideas for addressing what the sector itself has identified for action in the development of more sustainable arts practice and arts support across regional Australia. It is fertile ground for planning the priorities and activities of Regional Arts Australia over the course of the next three years. The 2006 National Directions: Regional Arts publication was officially launched in Perth, on Monday, 13 February 2006 by Dr Margaret Seares.

*“the arts brings together different generations, introduces new ideas, more diverse views and cultures.”*  
(RAA National Consultation, Tasmanian Questionnaire)

*“to bring arts and cultural activities to this community facilitates opportunities for those unable to travel to experience aspects of the arts that would otherwise be missed”*  
(RAA National Consultation, Tasmanian Questionnaire)

Lee Cole, Tasmanian Living Artist Week 2005



## MARKETING

- > TACTICS - A high quality magazine that profiles TRA activities and regional Tasmanian artists and communities but also disseminates national / state level arts information. Three editions in 2005.
- > RAW - Regional Arts Wrap Monthly e-bulletin contains listings of national / state / local artist opportunities, funding, events and arts industry information. Targeted for a regional readership. 8 RAW bulletins in 2005 to 500 recipients the majority being artists in regional Tasmania.
- > TRA WEB SITE - Site contains current and past TRA activities / projects and links to national / state level arts information. Since the new site was launched in November 2004 there have been over 8,000 hits to over 80 separate pages.

- > INFORMATION MAIL OUTS & HAND OUTS - TRA regularly distributes information through targeted mail outs to TRA branches, community and arts organisations in Tasmania. TRA also maintains event hand out boxes that are taken to all events that TRA runs or attends. These contain high quality arts information for distribution and education. These items are collected from a range of government and arts / community organisation sources and range from grants handbooks, how to and case study publications to insurance info sheets and promotional materials.
- PROMOTIONAL MATERIAL - Colour A3 & A4 Posters and DL flyers - designed and printed in house for ten events. Performing Arts Touring Programs were developed for the following tours: Sunwrae, Festival of Voices, The Business and Terrapin Puppets. Bound exhibition guides with detailed information including artists statements were developed for The Tap Exhibition, Material Girl and the Super Circles Exhibition. A4 catalogue / hand outs and exhibition manuals were also developed for these exhibitions. The manuals contained (media releases, education kits, itineraries, marketing hints, handling procedures and condition reports) Professionally printed 3fold catalogues were developed for the Exhibitionists (with CAST) and the Art Ability Exhibition (with Arts Action, Tas)
- > RAPN - Regional Arts Promoters Network - TRA participated in teleconferences where possible.

## PUBLICATIONS & REPORTS

- > Annual Report 2004
- > Branch Manual 2005
- > Artistic and Statistical Report of Activities for 2004 (Australia Council & Arts Tasmania)
- > Business Plan - Tasmanian Regional Arts 2005/2006
- > The Real Event - Conference Program and Booklet
- > Touring Menu - Tasmanian Regional Arts 2006
- > Regional Arts Fund Strategic Framework for Tasmania 2004-2008
- Regional Arts Fund, Tasmania - Acquittal Report 1 July 2001-30 June 2004
- > Regional Arts Fund, Tasmania - Financial Year Report 2004/2005
- > Foster.K - Catalogue Essay - Concrete & Ashes
- > Jenni Sharman (NDO) provided assistance in the editing of the Meenah Mienne Report. (Reporting on a mentorship project for young, at risk Aboriginal people by aboriginal artists).
- > Arts Roar Accessible Arts project, coordinated Jenni Sharman (Network Development Officer) featured in the following publications: Making The Journey: Arts and Disability in Australia: Section Two Making a Difference, Artwork: Issue 61 & Brave Arts CD ROM
- > Submission to the Australia Council regarding Planning for the Future
- Submission to Tasmanian Together 10 year Review

## STAFF DEVELOPMENT

Lucy Kenneth (Executive Director) holds a Bachelor of Arts - Fine Arts (University of New England, Lismore), a Graduate Diploma in Applied Science - Cultural Heritage Management (University of Canberra) and completed a Masters in Cultural Heritage Management (Deakin University) in 2005. Her final research project included mapping the community based arts sector in Tasmania.

Teresa Beck-Swindale (Cultural Touring Officer) holds a Bachelor of Arts - Library Studies (SA Institute of Technology), a Certificate of Music Performance (Adelaide TAFE) and an Associate Diploma of Music (University of Tasmania). During 2005 Teresa led 5 Vocal Nosh singing sessions in regional Tasmania. She also provided significant volunteer support to Slipstream Circus. A highlight for 2005 was ending the year performing in the band Nine lives to an audience of 10,000 at News Years Eve celebrations in Burnie.

Jenni Sharman (Network Development Officer) holds a Bachelor of Arts (Political Science/English), a Diploma in Education and a Graduate Diploma in Educational Studies (University of Tasmania). In 2005, she coordinated the Wheel Deal Youth Transport Project winner of the Local Government Community Development Award and Best State Local Government Project Award.

Karlee Foster (Youth Communications Officer) holds a Certificate II in Business Administration and completed the Certificate IV in Arts Administration at Launceston TAFE in 2005. As an element of the course Karlee curated an exhibition of her own work titled 'Concrete & Ashes' at Arts Alive, artist run initiative in Launceston.

Felicity Harris (Grants / Administration Officer) holds a Bachelor of Arts Majoring in Sociology and Political Science (University of Tasmania) In 2005 she started a Masters in Regional Development.

Keith Duncan (Finance Officer) holds a Certificate IV in Financial Services. When not working for TRA he is a senior Tax Agent with a Devonport based firm. Prior to working in the finance area Keith worked as a craftsman in silver smithing and leather work.

## ORGANISATIONAL ADVOCACY

- > Regional Arts Australia - National Board (Lucy Kenneth & Lynne Price -President) attended meetings in Adelaide, Canberra, Sydney, Melbourne and Launceston. This included a branding workshop with Peter Steidl in Melbourne. Jennifer Lathwell (Board Member) attended the Adelaide meeting on behalf of Lynne. Jenni Sharman & Karlee Foster attended the RAPN Communications Exchange in Darwin, Felicity Harris attended Grants Management System training in Adelaide & Teresa Beck-Swindale attended Creative Volunteering meetings also in Adelaide.
- > Australia Council for the Arts - Lucy Kenneth attended a Community Partnerships workshop in Sydney. Jenni Sharman & Jennie Gorringer (Board member) attended an Australia Council for the Arts, Key Organisations meeting in Hobart.
- > National Arts and Cultural Alliance - Lucy is a member of the Online Working Group and chaired a state wide advocacy meeting in response to the changes to the community cultural development board of the Australia Council in Ross, Tas.
- > Arts Tasmania - Lucy Kenneth attended an Brand Development Workshop in Launceston conducted by Anne Ker from Red Inca.
- > Blue Heelers - Teresa Beck-Swindale attended Long Paddock showcase of touring product in Sydney, Lucy Kenneth attended Blue Heeler strategic planning day in Melbourne.
- > State Library - Teresa Beck-Swindale made a presentation to the State Business Managers meeting.
- > Arts Access Australia - Jenni Sharman & Jennie Gorringer (board member) attended a national meeting in Hobart.
- > Tasmanian Education Department: - Jenni Sharman provided input in to the Area Taskforce on Post School Options for People with a Disability. Karlee Foster & 2 other TYCC Members attended a meeting with Paula Wreidt, Minister for Education, Hobart.
- > Office of Youth Affairs - Jenni Sharman provided input into the consultation on the needs of young people with disabilities.
- > YACfest Youth Advisory Committee - Karlee Foster attended Annual Forum in Adelaide
- > Young People and The Arts Australia - Karlee Foster also participated in Creative Collaborations, Melbourne.
- > Tasmania Community Foundations Karlee Foster attended the Regional Forum in Geelong.
- > Tasmanian Local Government Association - Jenni Sharman & Karlee Foster attended the state Conference in Hobart.

*"Hi Teresa , The feedback from your presentation has been simply excellent! It was very timely for you to come and talk about the whole range of things that Tas Regional Arts is involved with and you presented with friendliness and confidence - a winning combination! Thank you for contributing your time to this meeting. It was great to meet you. I am sure your liaison with Ted at the Devonport Library will lead to even more opportunities and I am confident that other managers will not forget how useful the contact with your organisation will be", Karmen Pemberton, A Senior Librarian (Policy Planning) - State Library of Tasmania"*

Note: Additional advocacy is detailed under program activities.

# PROGRAMS

## ARTs PLUS

COMMUNITY BASED ARTS - YOUTH, WELLBEING, COMMUNITY

Through the Arts Plus, Community Cultural Development Program TRA provides networking, project development and support, partnership facilitation, mentoring and advocacy services to Tasmanian communities to assist their cultural development. Arts plus is delivered through three areas of activity: youth, wellbeing & community.

## YOUTH

### HIGHLIGHTS

- > Real consultation and ownership of activities by young people  
Linkages established with arts & non-arts youth / health service providers
- > (local government youth officers, youth health and arts organisations)  
Additional funding secured for youth arts and wellbeing activities from
- > state and federal funding.

Between 2004 and 2006 Tasmanian Regional Arts has a Cultural Access Focus on Regional and Isolated Youth. This focus is being realised through our projects and program delivery but also extends to our core operations and through to our staff development. We understand that it is not enough just to provide more opportunities for young people to be participants in arts projects. To really make a difference in the area of access and engagement of youth in the arts there needs to be real involvement. Young people need to be included at all levels, as project

coordinators, marketers, technicians and trainers. Young people relate to other young people and an effective and proven youth engagement tool is to employ a young person as a project coordinator.

In 2004 we provided seeding assistance to a number of youth projects, in 2005 we have worked to build collaborative relationships and focused on training and skills development activities. Through our Youth Communications Officer Karlee Foster (19yrs) TRA has actively participated in key state wide youth committees and consulted directly with young people.

### KEY ACHIEVEMENTS

- > Collaboration with three local governments (Launceston, Dorset & West Tamar) to deliver Events Management training for 37 young people in the lead up to Youth Week 2005.
- > TRA hosted an Arts Advocacy and Lobbying workshop through a partnership with Young People & the Arts Australia.

- > 25 young people attended the TRA State Conference - the REAL Event to gain arts management skills, intergenerational mentoring and valuable community networks.
- > Support for dynamic Launceston youth arts group Manic Productions to further develop. In 2005 they secured a dedicated studio and exhibition space, exhibited young designers, created a regular street 'zine' and represent the younger side of TRA membership at events and festivals, such as the Manic Stall at the 2005 Marion Bay Falls Festival.

### PARTNERSHIPS

- > Tasmanian Youth Consultative Committee partnership active with Memorandum of Understanding developed.
- > Link developed with the Tasmanian Community Foundation to develop a state wide Youth in Philanthropy committee through partnerships with The Foundation for Young Australians, and Foundation for Regional & Rural Renewal.

## ADVOCACY

Karlee Foster participated in the following committees:

- > Tasmanian Youth Consultative Committee, NW Rep, 8 regional, 6 state meetings attended.
- > Tasmanian Community Foundation, Youth in Philanthropy
- > Chair of the Foundation for Young Australians, Youth for Youth Investments
- > National Youth Week 2006 - State wide Steering Group

Karlee also attended the Rotary Youth Leaders Award Conference, 7 day intensive in Ulverstone.



Imogen and Gemma, photo: Karlee Foster

## CONSULTATION

In 2005 TRA conducted an in-depth youth consultation through a photo-voice process in Flash 15. The consultation involved 80 young people from all over Tasmania who produced 300 photographs and statements responding to four questions about their: concerns, needs,

wants and identity. The responses to this youth consultation have now been collated into quantitative data sets. This will be developed into a report and disseminated through government and community sector networks. In addition to this an interactive multi-media version will be developed in exhibition format to tour Tasmanian schools and other venues throughout 2006.

ISSUE OF CONCERN	%
Land Use/ Environment	37
Safety	18
Housing	11
Confidence/ Self Esteem	9
Time Management	5
Cars/Petrol	5
War/Violence	3
Mass Marketing/Consumerism	3
Substance Abuse/Addictions	3
Poverty	3
Other (Services & Isolation)	3

*"I'm concerned about no hay for the cattle. No rain means no grass, which means no hay and hungry stock".*  
(St Mary's, female, 15yrs)

*"I'm concerned about homelessness and no-where for young people to go".*  
(Glenorchy, female 17yrs)

*"I'm concerned about obesity. A lot of kids are overweight here and I know a friend of a friend who had a minor heart-attack because of his weight".*  
(Currie, male, 16yrs)

## TAS TOON Animation Workshops

Tasmanian Regional Arts presented animation workshops in Tasmania for the third year running. In November 2004 workshops were held in six schools, in 2005 the program was expanded with major support from the Tasmanian Department of Education. The workshop tutors were Mark Richards (NSW) and Richard Stevens (Tas).

## FEEDBACK

*Hi Karlee,*

*Just wanted to thank you, Tas Reg. Arts and Tony (Dept of Education) for organising the cartoon animation workshop for us and the other schools. My kids had a blast and have demanded that they come back for a follow up workshop... they were really enthusiastic about learning the craft that Mark and Richard had to share with them. If there is any way that we could be offered more workshops like that - we would be so very appreciative!!! Its not often that we are able to participate in things like that due to our area, funding etc. Again - BIG thankyou the kids loved it! Le!*  
(Teacher Deloraine High School)

# ARTs Plus

COMMUNITY BASED ARTS - YOUTH, WELLBEING, COMMUNITY

---

## WELLBEING

### KEY ACHIEVEMENTS

- > 220 attendances at regional arts+health forums - Forums attracted diverse range of stakeholders, from arts, health and community service sectors. Balanced to include national, state and local presenters.
- > Local level wellbeing working groups now active with strong cross community ownership
- > Queen Victoria Museum and Art Gallery supporting office space for Network Development Officer
- > Arts Action, Tas manager appointed
- > Access Arts Link Project grant application successful
- > Arts Roar working towards the organisation being managed by participants
- > Emma Butler (Arts Roar) awarded Young Tasmanian of the Year 2005

## PARTNERSHIPS

- > Arts & Health network active with cross sectoral and community based ownership
- > Arts Action, Tas - TRA has continued to play a key support role for the revitalisation of the disability arts network in Tasmania.

## ADVOCACY

Jenni Sharman participated in the following committees:

- > Interweave Arts Association
- > Arts Roar
- > Arts Action
- > Arts Access Australia
- > International Day of People with a Disability: Launceston
- > The Big Chair Challenge
- > Access Arts Link
- > Ravenswood Neighbourhood House
- > Family Planning Selection Panel
- > Launceston City Council: 6 Pack Project
- > Statewide Steering Group Arts and Health Network
- > Arts and Health Committees: Tamar Valley, Meander Valley, Northern Midlands, North West Coast
- > Tasmanian Regional Arts Regional Arts Fund Panel (March round only).

Jenni Sharman attended the following workshops/conferences:

John Armstrong Workshop on Intellectual Disability, Launceston August 2005  
Our Community Our Art: Huon Valley August 2005

## ARTS & HEALTH NETWORK

Since 2002, Tasmanian Regional Arts (TRA) and the Health Promotion unit of the Tasmanian Department of Health and Human Services (DHHS) have been working collaboratively in the area of arts, health and wellbeing in Tasmania. A state wide 'founding conference' in September 2004 was facilitated by Deb Mills and attended by 80 individuals and organisation representatives. Key stakeholders involved in the network include health workers, community organisations, local councils, individuals and art organisations. In late 2004 TRA successfully applied to the Australia Council for funding to hold forums and workshops aimed to increase skills levels and networks. The "Think Outside the Box" initiative involved 3 regional forums and a series of community based workshops aimed at building networks between the arts and health sectors at the local level. Much was achieved in 2005, with strong attendance at forums and has led to the establishment regional working groups who are now overseeing the community workshops.

## NORTH WEST

- The Penguin Forum provided the starting point for developing the Arts + Health Network in the North West. Since then four interagency meetings have been held Strategic Plan developed. The resulting plan has been utilised as the basis for a statewide framework and will also inform the funding applications for a statewide coordinator. A good working relationship has also been established between the West Coast Health youth worker, the West Coast TRA Branch and the Rosebery Neighbourhood House.

## NORTH

- Nearly 100 people attended the Arts and Health Forum in Launceston in July. From this initial gathering, regional meetings and workshops have held in the following areas: Tamar Valley, Campbell Town, Meander Valley and



*A is for Ability* - Susan Hume

Scottsdale / St Helens. Thankyou to Jan Von See and Tina Binns (Health Promotion) for their work in the north. **South** - A very successful arts and health forum was organised by Jeanette Dal Santo from the Huon Valley Council with support from the Health Promotion workers Sue Chaston and Jacquie Maginnis.

## ARTS ACTION, TAS

TRA has continued to play a key support role for the revitalisation of the disability arts network in Tasmania. Arts Action Tasmania is the new peak arts and disability body in Tasmania. Arts Action, is a member of the national accessible arts network, Arts Access Australia, and has as its focus the building of culturally inclusive communities. TRA again provided funding towards the Arts Action position based at Moonah Arts Centre and has also assisted with local networking, project facilitation, strategic development, funding application development, marketing / communications and provided program managerial support where needed.

Arts Action, developed with assistance from Tasmanian Regional Arts will act as the peak arts and disability organisation for Tasmania. Arts Action has employed a statewide manager, Marianne Taylor, who is working hard towards establishing broader support for the arts/disability sector in the state. Emma Butler (Arts Roar) and Jenni Sharman (Network Development Officer) were the northern representatives on

the Arts Action board during 2004 - 2005 with Emma Butler and Mike Watson assuming this role for 2005-2006. TRA board member, Jen Gorringer was a driving force in getting Arts Action off the ground.

## ARTS ROAR ACCESSIBLE ARTS PROJECT

Arts Roar in Launceston is being supported by TRA through Jenni Sharman's capacity as the Network Development Officer. Arts Roar members now have representatives on the Launceston City Council's Access Group, Youth Advisory Group and Safer Communities Partnership Committee. During 2005 Jenni assisted Arts Roar participants with their monthly meetings and the organisation of the following projects:

### No Access For Me

In 2005 Arts Roar conducted access audits of businesses using access cards developed by Arts Roar participant, Gerard Smith with financial assistance from the Launceston City Council's Access Committee. Interest has been expressed by the Burnie Council in adopting these cards for their municipality.

### The Gatherings

is a collaborative project between Arts Roar, Tasmanian Regional Arts, the Adult Day Support Service, Northern Suburbs Community Centre, Rocherlea Primary School, Student Works and

# ARTs Plus

COMMUNITY BASED ARTS - YOUTH, WELLBEING, COMMUNITY

---

Brooks High as part of the Island Life series. Workshops attracted over 450 participants with strong feedback from students stating they had developed a more positive attitude towards people with intellectual and physical differences.

## The Labyrinth

is a two dimensional hand built tile maze that will be installed in Launceston's City Park in March 2006. Dozens of community members and students have worked along side Arts Roar participants in the creation of tiles and stepping stones for the labyrinth.

## The Super Starters

project involved Arts Roar participants working with young people from the Northern Suburbs Community Centre Extreme Team Youth Group and artist Sandra Lancaster, to create four fabulous sculptures to act as starting markers for the Big Chair Challenge.



## International Day for People with a disability

(Launceston) - Previous International Day events have been held on the periphery of the Launceston CBD, often attracting an audience already supportive of disability issues. This year the committee wanted to bring the event into the centre of Launceston's CBD in order to highlight the day to a new audience. With this in mind International Day was held in the Brisbane Street Mall and, despite the weather, attracted an audience of hundreds of supporters and Christmas shoppers. The Network Development Officer coordinated the event.

## The Big Chair Challenge

is an event in its second year in which local identities are invited to participate in access challenges from the seat of a wheelchair. This event was coordinated by Emma Butler (Arts Roar) and was a great opportunity to highlight the everyday access issues faced by people with disabilities. The Big Chair Challenge received strong media coverage and support from a range of services and businesses.

- < Matt Viney (Arts Roar) Super Starter
- ✓ The Big Chair Challenge  
(Launceston Mayor Ivan Dean far left)



# COMMUNITY

TRA has been part of Tasmanian communities for over 50 years. Through our activities we look to strengthen the cultural capacity of regional communities. One very effective mechanism to achieve this is to work directly with key arts players in local communities. TRA has an extensive network of 26 community based arts branches in regional Tasmanian communities including the three major Islands. For many years members of the TRA network have played important roles as the drivers and advocates for cultural development in their communities. They have worked hard to develop and present arts experiences that reflect a sense of

identity and place and highlight their communities concerns, aspirations and needs. In 2005 a number of localised arts groups that make up the TRA state wide network participated in local government planning process and are represented on community consultative committees.

Through the network TRA works to develop:

- > linkages between regional communities and arts organisations,
- > increase cultural cooperation within and between regional communities,
- > facilitate partnership activity with local government towards more effective cultural development.

In addition to the participation of this network in other TRA programs and activities TRA also provides administrative, infrastructure (including insurance) project development,

advocacy and industry support to local communities through these branches.

## KEY ACHIEVEMENTS

- > TRA Network strong and expanding with links developing into TRA youth and wellbeing activities.
- > Local councils seek TRA branches input towards cultural planning process (Meander Valley cultural/recreation planning group).
- > Strategic planning & events development for three TRA branches (Bruny Is, Mersey, Oatlands)
- > The Real Event - strong partnerships and networks developed & real involvement from young artists

## PARTNERSHIPS

- > Tasmanian Local Government Association - information exchange - front cover and two page article in Tas Local Govt magazine on effective local government arts partnerships (Burnie Arts Council / Burnie City Council)
- > Ten Days on the Island partnership strengthened through joint planning and development of community based project for 2007.

< Circus Supersillyus, photo: Alison McCrindle



# ARTs Plus

COMMUNITY BASED ARTS - YOUTH, WELLBEING, COMMUNITY

---

## COMMUNITY INITIATED ACTIVITIES

---

### ARTS DELORAINÉ

- Tarts for the Arts (music & food event)
- Happy Hookers rug makers
- Call my Bluff update meetings
- Jewellery workshop
- Creativity & Learning meetings
- Supersillyus Circus

---

### ARTSCAPE WEST TAMAR

- Art & Jazz Exhibition

---

### BRUNY ISLAND

- Sea Dragon performance
- Kids Artzone
- Artists Trail (TLAW)
- Easter Art Exhibition
- Stage Fright Night
- AGM Jazz Concert
- Harlem Lounge Dance
- Public Film Nights
- Film Society Nights
- Boat trip
- Singing workshop

---

### BURNIE

- Cradle Coast Orchestra
- Sand Sculpture
- Pavement art
- Christmas Parade
- Burnie Youth Choir
- Burnie Agricultural & Pastoral Society, show day
- Taiko Drum workshops
- TSO Haffner concert & talk
- TSO workshop

---

### CIRCULAR HEAD

- Art/health therapy workshop
- Mural project, CCD Mentorship
- Workshop for VOYS singers

---

### CYGNÉT

- International Film Festival
- Roller Disco
- Winter Solstice concert
- Lantern making workshops
- Mogadon Dancers
- Bollywood Film Festival
- Dance & Drama for under 5's
- "Arts End Market"
- Circus workshops

---

### DERWENT VALLEY

- Blues n' Art Sale
- Practically Art
- DIY Together
- Art Tuition
- Amazing Parents

---

### EAST DERWENT

- Wash Day Blues, launch & workshops
- Play reading 'Under Milkwood'
- Writing Workshop
- The Ageing Face lecture & workshop
- Quilts in the Barn
- Textile Design workshop

---

### FAR SOUTH - EXHIBITION INTERVIEWS JAN 06

- Dover Township Banners
- Christmas Decorations
- Candlelight & Carols at Aquatic Centre
- Arts on Kents Beach for Seniors Week
- Public Planning workshop

---

### FLINDERS ISLAND

- Felting Workshop
- Cartooning workshop
- Scrapbook making
- Banner painting
- Card making
- Poly clay modelling
- Sand sculpture fest
- Moon Bird Fest workshops

---

**GRASSY BOTTOM**

- Cakewalk Films, 7 sessions
- T- Shirt fabric printing workshop
- Lantern making
- Shadow puppet workshops
- Painting workshops
- Winter Solstice event
- Markets
- Maypole Dance
- Orienteering Day fundraiser

---

**GREAT OYSTER BAY**

- Tap Dancing
- Play Readings

---

**GREATER GREEN PONDS**

- Daniel Ho concert
- Snapshots of our Community, public event
- Christmas Dinner/theatre show
- Branch meetings
- Banner painting

---

**KING ISLAND**

- "Wild Goose Chase" play

---

**LAUNCESTON**

- Watercolour artists' exhibition
- Harmony Day painted flags exhibition
- working with natural material
- Go Dada

---

**LEVEN**

- Windows to the Arts
- Slipstream Circus, Showtime in the Park
- Banner making for Showtime
- Arboretum art based activities

---

**LIGHTHOUSE**

- Wash Day Blues
- Quitting the Blues
- Tying the Blues
- Reception for Georgetown on Show
- Reception for Super circles

---

**MACQUARIE**

- Great Painting Race
- Settlers Walk CD Rom
- "baa RAM ewe" Singing Group
- Singing concerts
- WH Tofft Art Award

---

**MERSEY**

- Jazz O'Farrell
- Poetry Reading afternoon
- Organisational development workshop
- Christmas Luncheon at Tranquilles
- Tas Jazz at The Gallery
- Chordwainers concert

---

**NORTH EAST**

- Living Artists Week
- Dorset Quilters Exhibition
- North East Showcase
- St Helens jazz group
- Porcelain Painters Exhibition

---

**OUT ON A LIMB**

- Tsunami benefit concert
- Pumped: instrument making workshop
- Pumped: community music workshop
- Artists' trail
- support for film shows, concerts & school events

---

**SOUTHERN BEACHES**

- Sea Net travelling exhibition
- Life drawing
- Social BBQ
- Beach fun day
- Arts Lounge
- Art exhibition
- Banner workshop
- Social dinner
- Messy Art in the Park
- Silk flags workshop

---

**TRAK ON TRACK KENTISH**

- Working art space established / operating
- Living Artists Week Exhibition
- Web page design with arts@work

---

**WEST COAST**

- Children's activities
- Open Mine Day
- Art workshops
- Christmas Parade

---

**WINDMILL VILLAGE**

- Craft Group
- Pages & Samplers workshop
- Introduction to Patchwork
- The Knitting Room workshops
- Felting workshop
- Oatlands Open Day, art exhibition

# ARTs Plus

COMMUNITY BASED ARTS - YOUTH, WELLBEING, COMMUNITY

---

## TRA STATE CONFERENCE - DELORAINA SEPT 2-4



From Friday 2nd to Sunday 4th of September 2005 the community of Deloraine hosted the Real Event - TRA's State Conference. Over the three days 100 TRA members and friends gathered to listen, create and share in art experiences with other artists from across Tasmania. One quarter of the delegates were 25 years and under; a direct result of a Women's Tasmania grant (Get Real Girl) and a youth subsidy from Tasmanian Alkaloids. There was strong representation from the health and local government sectors. Delegates came from all over Tasmania including all three Islands.

The REAL Event comprised a series of workshops, events and networking opportunities at a range of community venues in Deloraine. The Deloraine community is a leader in the arts area in Tasmania and the conference and the cross community relationships that were developed served as a positive example for other communities to view. The local Meander Valley Council gave strong in-kind and financial assistance to the conference, this went towards venue hire and performance fees for local artists. Nearly every community organisation and a great many businesses in Deloraine were involved in the conference in some way. From Rural Youth, to the Uniting Church hall, Tasmanian Alkaloids to the Rotary Club, Youth Circus to the Big Band and the Visitors Centre.

### FEEDBACK

40% of delegates filled out evaluations, (even spread across regions and age groups) of these 76% Really Enjoyed, 21% Enjoyed & 3% (one respondent) Neutral.

*"I really enjoyed myself and have already put up my hand to go to the next State Conference" (King Is)*

*"It was a marvellous opportunity to network and learn more about what ARTS can do within a community."*

*"I had great fun, am totally inspired to continue with this incredible flow of work within the arts"*

*'Too many things I wanted to do, not enough time!!'*

*"The Saturday workshops were very 'hard' work"*

*"Wonderful conference, can only regret that one can't be everywhere at once."*

*"Thorough schedule, great catering, location, facilitated workshops, entertainment, really supportive structure."*

*"Obvious community spirit in coordination"*

*"I did the most getting to know people on Saturday whilst at the basket weaving workshop. There is something very special about sitting around with kindred spirits and doing some hands on stuff!"*

*"The coming together of such a diverse and energetic group committed to the arts and community was amazing - we left reinvigorated and enthused."*

## COMPONENTS

- > Officially opened by Tasmanian Minister for Arts and Industry Lara Giddings.
- > Key note speaker was Professor Frank Vanclay - a rural sociologist based at the University of Tasmania who shared case studies of partnership projects with an art focus between rural communities and the National Museum of Australia.
- > Welcome to country by Hank and Carol Horton with dancers from Mole Creek.

## WORKSHOPS

- > Inspiring words and ideas with Neil Cameron - Use old stories from myths and archetypes to retell stories of relevance for today.
- > Event Planning and Resourcing with Karan Jurs - Find the arts manager within you. This workshop was a taster for Creative Volunteering - No Limits a national skills development program specifically for volunteers in the regional arts sector.
- > How to Capture your Audience with LIVE Performing Arts Tasmania - Be inspired with ideas for audience development and how to “get bums on seats”.
- > Making the Most of your Exhibition with Lucy Kenneth and Karlee Foster - From selecting the works, handling, freight options, venue selection, lighting and public programs.
- > Clowning as an Art Form with Neil Cameron - Discover your inner clown by learning “Red Nose clowning”

- techniques with one of Australia’s leading community theatre directors.
- > Art from Found Objects with Kim Clark - “What is Art?” With lively discussion and hands-on experimentation to assemble found objects into sculptural artworks.
- > Interpreting Contemporary Art with Jane Deeth - This workshop looked at artworks that may be difficult to get into or get our heads around. We used a simple step-by-step approach to deconstruct artworks in order to engage the meaning and purpose of the work.
- > Show Presentation and ‘Techie’ Stuff with Teresa Beck-Swindale and Darren Willmott - Covering the nuts and bolts of show presentation from front of house, to ticketing, to meeting performers’ technical needs. This workshop gave ideas for hosting TRA shows and other productions.
- > The REAL Event - Saturday Workshops - The conference delegates split into four teams to work with Directors Neil Cameron, Stuart Loone, Karan Jurs and Kim Clark. Over the day the teams covered the “how to’s” of event development and presentation from the nitty gritty of timelines and marketing to the creative processes needed in a performance. Aspects of visual art, sound art, technical needs and community partnership building were incorporated into the day. The teams developed and produced four - 25 minute performance pieces that were presented to the entire delegate group. This interactive approach to an arts conference proved very successful

with each team comprising a mix of age and geographic groupings. The networking and collaborations between regions and generations were extensive and positive.

## OTHER ACTIVITIES

- > Artists in residence and workshops - Lee Cole demonstrated weaving and constructing artworks from organic materials at the Deloraine
- > Community Garden.
- > Sculptor John Parish has been working with participants at Ashley Detention Centre on a ceramic mural titled “The Journey”. A sample of the mural as a work in progress was on display at the Deloraine Community Complex.
- > foot bagging”(hacky sack foot juggling) with Jeremy O’Wheel (national champion)
- > Flash 15 photo voice project with Karlee Foster
- > Branch Out - showcase of events & projects happening around the state.
- > Ten Days on the Island forum with Elizabeth Walsh, Director, Ten Days on the Island and Lucy Kenneth, Executive Director, Tasmanian Regional Arts discussed future collaboration between TRA and Ten Days. In particular regional touring and the possibility of a major regional arts project at the next festival in 2007.

# ARTs Plus

COMMUNITY BASED ARTS - YOUTH, WELLBEING, COMMUNITY

---

## AN ISLAND LIFE

### STATE WIDE COMMUNITY CULTURAL DEVELOPMENT INITIATIVE 2002-2005

Every three years TRA undertakes a major community development project across a number of regional locations. The projects aim to increase the professional skills of regionally based artists / arts workers and increase wider community engagement in the arts through consultative process.

This state wide project was initiated in 2002 and completed in 2005. It addressed the different issues that communities face. Regional projects were run in Swansea, Meander, Launceston and Dover and featured a diverse range of art experiences and artforms. An Island Life aimed to consolidate excellent community cultural development practices by Tasmanian artists; to raise community awareness of the benefits of inclusive process & to create outcomes that could be built upon. An Island Life resulted in some strong achievements in terms of partnership development, skills building and increased awareness for community based arts. Utilising an arts based process to work across divided communities is a difficult and involved

process that requires a long term investment - more than can be achieved in one project alone.

Of the four projects undertaken, two focused on an issue that was of common concern across much of the community. In Swansea it was water quality and in Launceston it was disability awareness. These issues weren't so much divisive as in need of greater public awareness and debate. The other two projects, in Dover and Meander, were focused on celebrating the history of particular places. However, pre-existing issues over land use at these sites proved so strong that the projects themselves became divisive in trying to involve opposing sides of the communities. Project outcomes are continuing to unfold as travelling exhibitions, DVD's, CD ROMs and music CD's.

### KEY OUTCOMES

- > 62 artists were employed,
- > 27 partnerships were developed,
- > 1,278 people participated and
- > 7,378 people attended events.

## KEY COORDINATION

Siobhan Reid	Initiator, manager till July 2003
Cath Cantlon	Project facilitation
Lucy Kenneth	Project management from March 2004
Donnalee Young	Coordinator, Swansea
Jenni Sharman	Coordinator, Launceston
Wren Fraser	
Cameron	Coordinator, Dover
Rebecca Rowe	Co-coordinator, Meander
Kim Clark	Co-coordinator, Meander

## MAIN PARTNERSHIPS & SUPPORT

The Regional Arts Fund, The Australia Council for the Arts (Community Cultural Development Board) and Local government through Meander Valley Council, Houn Valley Council, Glenmorgan Spring Bay Council and Launceston Council.

## FEEDBACK

*"I learned that all community members can work together and that integration of people with disabilities is possible"*  
*"Made me think we can do many more projects like this in the future"*  
*"It has definitely changed my attitude toward art"*

(Staff from the Adult Day Support Services Gatherings Project)

*“These events helped us to further discover and celebrate who and where we are. It has empowered more people in the community to participate in the arts in their everyday lives.”*

(Donnalee Young - The Tap Project)

*“We had a difficult time trying to steer the community towards a design that had artistic merit and represented a history that wasn’t biased towards a pioneer settler’s perspective. These meetings were often uncomfortably aggressive, with some members of the community actively blocking any progress towards the project coming off the ground.”*

(Rebecca Rowe - Meander Sculpture)

*“The biggest challenge was being courageous enough to take it on and see the distance...As the project host organisation FSRA members found that the project took over their lives for nearly 15 months.”*

(Wren Fraser Cameron Art & History)

> Swansea Mosaic, The Tap Project



# ARTS 2U

PERFORMING ARTS, VISUAL ARTS

The aim of the program is to offer regional communities contemporary, engaging and entertaining performing works and visual art exhibitions, whilst encouraging participation, audience development and local skills building in the areas of networking, marketing and technical expertise.

## PERFORMING ARTS - TOURS

Over the past seven years TRA performing arts tours have experienced a steady increase in audiences and number of events hosted by volunteer networks in local communities.

In 2005 the program focused on developing partnerships with other arts organisations, producers and festivals and supporting local communities with encouragement to take on events. As a result regional communities had new access to performing arts products and were rewarded with incentives for hosting performing arts products. The dissemination of box office profit direct to communities in some cases and a Guarantee Against Loss for some communities resulted in an overall reduced box office taking for TRA in 2005, this was despite an increase in audience numbers of over 17%.

### KEY ACHIEVEMENTS

- > 9 touring products, inc 2 Tas producers & 1 International act
- > 46 events & 28 workshops
- > Even seven year spread of touring

- events through Tasmania's 3 regions - 36% in the South, 32% in the North and 32% in the North West.
- > 46 events in 2005.
- > Attendances increased by 1,204 in 2005, this represents an increase of over 17%.
- > Sunwrae Ensemble, June 2005 - managing to fit an incredible array of instruments and musicians arriving from several directions onto small planes to King and Flinders Islands without losing anything (or anyone).

### PARTNERSHIPS

- > Ten Days on the Island - very successful touring partnership in 2005.
- > Tasmania Performs - TRA represented on the steering group
- > LIVE - Performing Arts Tasmania is a non-profit arts organisation that exists to promote live performing arts and coordinate information on "what's on" where in theatre, dance, comedy & music across the state. In 2005 TRA joined LIVE as a partner attending meetings and facilitating a LIVE workshop at the TRA state conference.

- Other LIVE partners include: IHOS Opera, Salamanca Arts Centre, TasDance, is theatre, Terrapin Puppet Theatre, Theatre Royal and Tasmanian Symphony Orchestra.
- > Festival of Voices; assisted with development of regional workshop series. TRA took particular responsibility for the National Youth Choir workshop and performance
- > with Burnie Youth Choir and VOYS Singers in Smithton and the "Maps of the Imagination" event at the QVMA&G in Launceston in partnership with the Drama Australia conference & "Sounds of Leather" exhibition The Devonport Maritime Museum for their display to accompany The
- > Lightkeeper at the DECC Anglicare rural/remote/reconnect, King Island High School & King Island
- > Council youth development for collaboration and support on Sunwrae music workshops.

## ADVOCACY

Teresa Beck-Swindale attended the following meetings / workshops:

- > arts@work and Events Tasmania about developing a long term partnership in training for street performers and enhancing local festivals with appropriate performance product.
- > TRA tent at the Circus Festival in February was a great showcase for TRA programs and provided a breakout space for discussions
- > Long Paddock - A valuable means of tour selection and networking with national presenters
- > Wendy Blacklock, Director of Performing Lines, to discuss Tasmanian touring product
- > Live Tasmania to assist promotion of Tasmanian touring product
- > Events Tasmania X-Change, Launceston; Teresa wrote theme song for the participants to sing
- > Australian Script Centre play readings & forum at Backspace

## FEEDBACK

*"Dear Teresa, thanks heaps for all the great shows last year"*

Robyn Oh, Grassy Bottom

*"What a show I have just seen in Georgetown....the audience was spellbound and full of praise for the production after the show...if you have any chance at all please go and see it"*

H. Raak, Clarence Point, from a letter to the editor, *Examiner*, 12/7/05

*"Members of our association really appreciated the Tasmanian Regional Arts support for our Festival of Voices workshop with Kay Lincoln and her kSING choir from Deloraine on 16th July. ..the overwhelmingly positive response was most encouraging"*

Ringarooma Community Cultural Heritage Association

*"we travelled, we sang as we dined and wined our way through your lovely Tasmanian state. Still on a high and assessing it to be right up there as one of the most successful tours ever undertaken by the choir - and the glory goes to everybody who contributed in any way at all....Who knows, we may not be passing your way again in the near future as a collective choir yet be assured of our*

*very fond memories of your beautiful state and the hospitality you showed to every member of the Sydney Male Choir in 2005"* Winston Eldridge, SMC, Oct 05

*"I am writing to thank you and all the wonderful people that make up Tasmanian Regional Arts around the state for the great support we received on our Hard Yakka tour....Tasdance benefited from the assistance and generous support of the members who made a significant contribution towards the success of our regional tour....It heartens me to have the opportunity to work with so many wonderful creative people from all aspects of the production including the spectacular Tasdance performers, technicians and all local members of Tasmanian Regional Arts"* Annie Greig, Artistic Director, Tasdance, Nov 05

*"thank you for all your help, enthusiasm and support in the inaugural Festival of Voices. It was great having Regional Arts as a partner and the contribution you all made to the success of the festival was considerable and we hope you enjoyed the finished result"* Neil Cameron July 2005



Maps of the Imagination, Festival of Voices Event, QVMAG. photo: Patrick Roland

# ARTs 2U

PERFORMING ARTS, VISUAL ARTS

## 05 STATISTICS - PERFORMING ARTS

	Events	Audiences	Workshops	Participants	Artists	Arts workers
Seaman Dan	1	100	1	5	1	5
Crowd of Bold Sharemen	7	3,253	1	15	5	5
Sunwrae	3	179	8	95	6	1
Festival of voices	4	675	6	192	26	4
The Lightkeeper	6	292			2	1
Terrapin Puppet Theatre	4	220			3	3
The Business	3	233	2	36	4	1
Tasdance	10	1,817	10	194	6	4
Sydney Male Choir	7	1,340			42	2
<b>TOTALS</b>	<b>46</b>	<b>8,109</b>	<b>28</b>	<b>537</b>	<b>95</b>	<b>26</b>

### EVENTS / ATTENDANCE PER YEAR

Year	Events	Attendance
1999	29	1,285
2000	26	1,609
2001	35	2,199
2002	33	3,585
2003	36	3,923
2004	35	6,905
2005	46	8,109

### COMMUNITIES BY EVENTS 1999 - 2004 (TOP TEN)

TRA Branch	Events
TRA Branch	Events
Mersey	22
St Marys	21
Deloraine	20
Great Oyster Bay	17
Burnie	15
King Island	14
Cygnnet	13
Kempton	11
Circular Head	10
NERA	9

### COMMUNITIES BY ATTENDANCE 1999 - 2004 (TOP TEN)

TRA Branch	Attendance
TRA Branch	Attendance
Burnie	6,244
Mersey	4,821
New Norfolk	2,653
Deloraine	1,771
St Marys	1,509
Leven	1,422
Circular Head	1,054
Great Oyster Bay	889
Cygnnet	788
Far South	733

## TRAINING

TRA facilitated the training of emerging technicians through an intensive workshop series conducted at the Tasmanian Circus Festival at Golconda NE Tas. The workshops formed part of the wider workshop program in the week leading up to the festival. The four participants put their skills into immediate practical use in the Festival program as Technical Assistants. The training was conducted by Darren Willmott, a freelance production manager, lighting designer and sound technician who has worked with performing arts companies across Tasmania. Darren is a former production manager at the Devonport Entertainment Convention Centre and currently production manager for Scotch Oakburn College in Launceston. One of the participants Joe Pickett has recently won the position of Trainee with Queensland Theatre Company.

Darren Willmott & Teresa Beck-Swindale (Cultural Touring Officer), both graduates of the UTAS Performing Arts Course conducted a workshop as an element of the TRA State Conference - The REAL Event. Show Presentation and 'Techie' Stuff covered the nuts and bolts of show presentation from front of house, to ticketing, to meeting performers' technical needs.



Tasdance, *Hard Yakka*. photo: Lucy Kenneth

# ARTs 2U

PERFORMING ARTS, VISUAL ARTS

## VISUAL ARTS - TOURS

### 05 STATISTICS - VISUAL ARTS

	Events	Audiences	Exh Days	Artists
TAP	5	2000	76	31
Exhibitionists	10	4850	144	10
Material Girl	8	1954	126	19
Super Circles	4	3454	76	19
Art Ability	1	250	4	76
Kids up close	2	33850	53	1
Netconnect	1	200	4	12
Clarence Mapping	2	850	42	15
<b>TOTAL</b>	<b>33</b>	<b>47408</b>	<b>525</b>	<b>183</b>

### PARTNERSHIPS

Contemporary Arts Services Tasmania  
- Partnership for the *Exhibitionist*,  
Lucy Kenneth also a member of CAST  
Exhibition Touring Committee.



### EXHIBITION VENUES

Circular Head Rural Health Services  
Deloraine Community Centre  
Devonport Library  
Drysdale Restaurant  
e.Scape Gallery & Café - St Mary's  
Gallery 8 - Deloraine  
George Town Anglican Church  
George Town Watchhouse  
Huonville Primary  
Lilydale High  
Little Theatre, Deloraine

Mountain Heights District High  
Oatlands District High  
Pontville History Rooms  
Rosny Schoolhouse Gallery  
Scottsdale High  
Sorell Library  
St. Marys Community Health Centre  
St. Marys District High  
Swansea Town Hall  
The Scotts Centre  
Ulverstone High  
UTAS - Cradle Coast Campus  
Willow Court Arts Space  
Yolla District High

< *Kids up Close* Lloyd Wilday

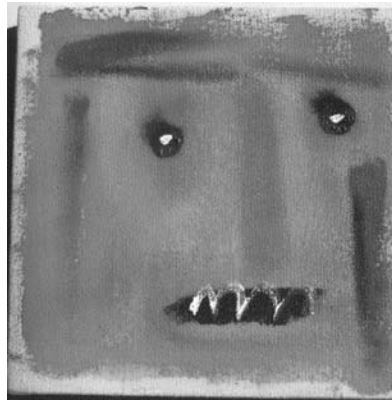
## The Exhibitionists

TRA supported the development and then toured this exhibition coordinated by art teacher Kirsty Butler. Developed through a partnership between TRA and Contemporary Arts Services Tasmania, the exhibition toured regional schools around Tasmania. It provided unique exposure to contemporary art for students who may not have visited many art galleries or exhibitions previously. Students were given the opportunity to install and manage the exhibition in each location. While many art educators are able to juggle their work commitments to maintain their own art practice, much of this work is not widely seen and rarely, if ever. The ten teacher-participants in the exhibition work in a wide variety of media. They are all emerging or 'mid-career' artists and many have experienced success interstate and even internationally. They include Wayne Brookes, Louise Davidson, Lisa Garland, Patrick Grieve, David Hawley, David Keeling, Melissa Smith, Helene Weeding, Katy Woodroffe and Helen Wright.

## Art Ability

The Art Ability exhibition has been developed by Tasmanian Regional Arts in partnership with Arts Action, Tasmania especially for touring to non conventional venues in regional communities where there are limited opportunities to experience contemporary art. The works included in Art Ability have been developed in workshops attended by over 50

artists from Multicap's Serpentine Gallery and Studio (Burnie), Arts Roar Accessible Arts Project (Launceston) and Cosmos Incorporated (Hobart). The works by practising artists who have a disability demonstrate that people with differences are making a unique and exciting contribution to contemporary art practice in Australia. The exhibition was launched at the School House Gallery - Rosny Historic Precinct in December 2005 and will tour the TRA network in 2006.



*Were wolf* John Virtue

## OTHER VISUAL ARTS PROJECTS SUPPORTED

### Hwy1#2

TRA supported this project managed by Jane Deeth that brought artists from Tasmania, the Philippines, Iceland and Taiwan to develop seven art installations in townships across the north west of Tasmania as part of Ten Days on the Island Festival 2005. In each project location Jane Deeth ran an Understanding Contemporary Art workshop for community members.

### Radio Holiday

TRA supported this project as an element of the Ten Days on the Island Festival in 2005. A three part, site specific community art project made for and with the people of beautiful holiday places, Radio Holiday combined a caravan road tour and the production of narrative works for radio with music, visual arts and a public forum that toured remote Tasmanian shack communities as part of Ten Days on the Island Festival, 2005.

# ARTS ASSIST

CREATIVE VOLUNTEERING, REGIONAL ARTS FUND

## CREATIVE VOLUNTEERING...NO LIMITS

Tasmanian Regional Arts in partnership with Regional Arts Australia is managing Creative Volunteering No-Limits, in Tasmania. Creative Volunteering workshops will be delivered by the Registered Training Organisation, CAN SA. The nationally recognised course consists of a series of stand alone, one day workshops developed for delivery to volunteers across regional Australia.

Training Modules include:

- > Carry Out Business Planning
- > Undertake Marketing
- > Develop Funds and Resources
- > Plan and Program Events
- > Network within Communities
- > Work with Collections

2005 marked a transitional time that spanned the completion of Creative Volunteering one (the first three years) of and Creative Volunteering two (the new four year series). The new series has been adapted to include a flexible approach to scheduling that responds to community requests. As a result the majority of activity in 2005 focused on promotional activities and taster sessions for the training. Only two training modules were delivered in Tasmania.

### TRAINING UNDERTAKEN

Carry out Business planning - Bruny Island & Ulverstone

### PROMOTIONAL SESSIONS

Plan & Program Events for 37 young people - Launceston (abridged taster)  
Develop Funds and Resources & Plan and Program Events - Deloraine (abridged taster delivered to 20 conference participants at the TRA State Conference)

### TRAINER

Karan Jurs has over 20 years experience in the Tasmanian community sector and has been employed by government and non-government agencies on management committees and peak bodies. She established 'Karan Jurs Consultancy' seven years ago and has delivered training, planning and group facilitation to a broad range of agencies. She brings energy, pragmatism and a sense of humour to her workshops.

### ADVOCACY

Teresa Beck-Swindale and Karen Jurs attended a two day Creative Volunteering meeting in Adelaide.



# REGIONAL ARTS FUND

The Regional Arts Fund is an Australian Government initiative supporting the arts in regional and remote Australia and delivered in Tasmania in partnership with Tasmanian Regional Arts. This report covers activities of the Regional Arts Fund in Tasmania for the 2004/2005 financial year.

The Australian Governments vision for the Regional Arts Fund is:

*“Creative and innovative regional, rural and remote communities in which participation in and access to cultural activities contribute to the sustainable cultural, social and economic capacity and wellbeing of individuals and communities.”*

## KEY ACHIEVEMENTS

- > 174 Artists
- > 5,370 participants
- > 15,430 audience members
- > 45% of funds were distributed to outer regional areas and 11% in remote Australia 45% of funding was distributed to youth beneficiaries.
- > Indigenous and CALD beneficiaries only represent 1% each of total project funding and it is evident that more advocacy work needs to be done to increase participation of these groups in the fund.
- > The funding distributed to artforms included 33% to Visual Art, 25% Theatre and 20% to multi arts and 12% to dance activities.

## PROGRAM OBJECTIVES

The Fund has a number of broad objectives designed to benefit arts practitioners, workers and audiences:

- > Assist the development of cultural networks, especially in isolated areas, to facilitate information exchange and co-operative relationships;
- > Assist sustainable economic and social development within regional, remote and very remote communities, including a focus on Indigenous and isolated communities;
- > Increase employment and professional development opportunities for and raise the profile of regional and remote artists; &
- > Increase skills development initiatives (including mentoring schemes), both for individuals and organisations in regional and remote communities. Initiatives may relate to a specific form of art or craft practice, or broader community cultural development and capacity building;
- > Develop partnerships with local government, community groups, the private sector, state government agencies and other relevant groups which leverage financial and/or in-kind support for specific projects and encourage ongoing collaboration or support for cultural activities following the funded projects;

- > Encourage and support sustainable cultural development in regional communities where possible, rather than ‘one-off’ events.

Applications for assistance from the Regional Arts Fund are assessed by the Regional Arts Fund Assessment Panel comprised of leading Tasmanian artists, arts workers and arts decision makers. The panel is balanced so that there is representation from geographic, art form and population groups in Tasmania.

## 2005 PANEL MEMBERS

Chair	Catherine Fernon, North West
	Jenni Sharman, North
	Donnalee Young, East Coast
	Tony Woodward, South
	Denise Robinson, North east
	Lizard Cannell, West Coast

Tasmanian Regional Arts has established procedures to ensure that there are transparent and accountable conflict of interest procedures for the decision making process and there are accountable, defensible and transparent written application, notification and acquittal processes for the distribution of the funds to grant recipients, along with processes for ensuring appropriate acquittal of funds. In 2004 / 2005 Tasmanian Regional Arts delivered the Regional Arts Fund through five targeted grant categories:

# ARTs ASSIST

CREATIVE VOLUNTEERING, REGIONAL ARTS FUND

---

---

## NEAR

Entry level funding to an emerging indigenous or regionally isolated artist or organisation. The aim of NEAR is to introduce arts activity as a tool for community development in isolated communities.

---

## CARS

Seed funding to facilitate partnership development between arts and other community organisations at the local level. The aim of CARS is to support the needs of organisations that are regionally disadvantaged.

---

## SOAR

Funding to an artist or organisation for SKILLS DEVELOPMENT activities. The aim of SOAR is to increase arts skills, dialogue, employment & professionalism

---

## ROADS

Advanced level funding to an established arts organisation for a significant ARTS PARTNERSHIPS project. The aim of ROADS is to inspire community engagement, develops partnership dialogue and capability and promote the benefits of arts partnerships for non-arts groups, organisations or agencies.

---

## LINKS

Funding of two years to an established regional arts organisation with a history of outstanding arts practice. The aim of LINKS is to encourage sustainable development, organisational capacity, governance and improved longer-term planning.

Only one funding round was conducted during this time with a closing date of 18th March 2005. The Regional Arts Fund Panel met in Latrobe, Tas on the 20th of April 2005 with all members attending the meeting. The Panel demonstrated their professionalism and collective knowledge of the arts industry by providing constructive feedback to all applicants.

# GRANT RECIPIENTS REGIONAL ARTS FUND 2004/2005

## NEAR – NEW & EMERGING ARTS RECIPIENTS

PROJECT NAME	AMOUNT	RECIPIENT AND PROJECT LOCATION	DESCRIPTION AND TARGET BENEFICIARY
Pastel Art Workshop	\$400	CWA Herrick Remote	Workshops leading to a display at the Tasmanian Country Women's Association handcraft and home industries exhibition. Women
Aurora Genii-Flight of the Phoenix	\$1,000	Margaret Kvesic St Marys Outer Regional	Audio visual hybrid dance performance leading to a higher level of hybrid arts practice in the local community. General Population

## CARS - COMMUNITY ACTIVITIES REGIONAL SUPPORT

PROJECT NAME	AMOUNT	RECIPIENT AND PROJECT LOCATION	DESCRIPTION AND TARGET BENEFICIARY
Pumped Developing music culture	\$2,000	Out on Limb RA Nubeena Outer Regional	A series of workshops to foster and promote music. The project encompasses all levels of musicianship, creating a cultural music hub. General Population
Drag Genre	\$2,000	Interweave Arts Launceston Inner Regional	A series of workshops will help develop skills such as theatrical performance, dance, choreography, makeup and costume in the genre of Drag. Youth
Winter Solstice	\$2,000	Grassy Bottom RA St Mary's Outer Regional	Assistance with artists fees for workshops and performances as part of fire and light extravaganza set on the longest winter's night. General Population
Identifying our Subcultures	\$2,000	Interweave Arts Launceston Inner Regional	Identifying our Subcultures project plans to utilise technology to make and present contemporary media work about our city and its occupants. Youth
The Knitting Room	\$2,000	Strath haven State-wide Inner Regional	The Knitting Room is a community art project in which participants use skills such as knitting, crocheting or weaving to create a walk- through room reminiscent of a 1950s home. Items from cup cakes, the mantle radio to the fire place are all pieces of art that make up the installation. Elderly

PROJECT NAME	AMOUNT	RECIPIENT AND PROJECT LOCATION	DESCRIPTION AND TARGET BENEFICIARY
Derwent Valley Circus	\$2,000	Derwent Valley RA Inner Regional	Circus trainers will be employed to work with students from five Derwent Valley Schools to teach circus skills, develop a performance and establish a circus culture in the Derwent Valley. Youth
Pandora's Box	\$500	Southern Beaches RA Inner Regional	Pandora's Box will develop, complete and tour an exhibition of 20 images on board using abstract styles. A special feature of this exhibition is that it includes a freestanding framework for displaying the images in a small exhibition space. General Population
The Chenrezig Mandala	\$2,000	Design Centre Launceston Inner Regional	Tibetan Monks from the fabled Gyuto Monastery in Dharamsala will build a Chenrezig sand mandala during two weeks in the Design Centre Galleries. General Population
Memories Rekindled	\$2,000	Reece High School Devonport Inner Regional	Reece's 50th Anniversary project rebuilds losses after the fire in 2000, reigniting identity and community. Design and construct seating incorporating images, anecdotes and memorabilia from the 1950's to the present day. Youth
Hybrid Installation	\$1,910	Launceston Inner Regional	Manic Productions is a dynamic group of young artists aged 16 to 23. Support to create a hybrid arts installation developed by young artists for a youth audience. Youth
Taiko Drumming	\$1,925	Burnie Arts Council Outer Regional	Proposal to employ sensei, Simon Vanyai to skill Burnie artists in the art of Taiko drum making over 5 weekend workshops. Several drums will be completed. This is one element in a large community drumming project. General Population
Fire and Water	\$2,000	Dunalley Neighbourhood centre Outer Regional	To celebrate the Centenary of the Denison Canal in Dunalley, Karen Zabiegala will work with the local community to build a raft that will be set alight and sailed through the canal. Children from the Dunalley Primary School will each make a lantern and then line the banks of the Denison Canal as the raft sails through. General Population
Wash Day Blues & Quilt the Blues	\$2,000	Senior Momentum State-wide Outer Regional	12 half day workshops in six rural areas linked to the priorities of Beyondblue. Wash day Blues is an installation of 'garments' recording events that have caused depression - the blues. Quilt the Blues - networking community craft groups and introducing resources developed by Beyond Blue, includes workshops, projects, and exhibitions. Elderly

## SOAR - SKILLS OPPORTUNITIES FOR ARTISTS REGIONALLY

PROJECT NAME	AMOUNT	RECIPIENT AND PROJECT LOCATION	DESCRIPTION AND TARGET BENEFICIARY
Metal Casting Mentorship	\$3,000	Sandra Lancaster West Launceston Inner Regional	The project application is for a mentorship between artists David Hamilton (mentor) and Sandra Lancaster (mentoree) to explore cast metal for sculpture and architectural furnishings. Women
Clown Training	\$2,000	Tina Aldridge/ Gai Anderson Cygnet Outer Regional	Highly experienced Melbourne based clowning teacher/director Claire Bartholemew, will conduct a week of intensive master classes, Claire will also lead community workshops in basic clowning. Women
Kodama Forest Installation	\$3,000	Lorraine Biggs/ Lila Meleisea St Marys Outer Regional	The building of a Suikinkutsu (water harp) by a visiting Japanese craftsman will be celebrated by us creating a series of accompanying sound sculptures and filming this cross cultural event. Women

## ROADS - REGIONAL ORGANISATIONS ARTS DEVELOPMENT SCHEME

PROJECT NAME	AMOUNT	RECIPIENT AND PROJECT LOCATION	DESCRIPTION AND TARGET BENEFICIARY
Arts on Whittle Ward	\$10,000	Moonah Arts Centre Hobart, Inner Regional	The Arts on Whittle Ward Project is a three month residency at the Whittle Ward, Palliative Care Unit, Hobart. Disabilities
A Flush of Art	\$10,000	Dorset Council Dorset region Outer Regional	A long term project designed to develop cultural capacity within each of the small towns in Dorset. The project will involve artists working in partnership with communities to artistically enhance each community's nominated toilet block. General Population
Sprung	\$5,351	Tasdance State-wide Inner Regional	Regional dance workshop series in September school holidays 2005. Ten communities have been selected because of their isolation, creative history, lack of dance instruction and low- economic climate. Youth
Body Work	\$10,000	Glenorchy Council Inner Regional	Contemporary dance skills workshops & performance for young people by Stompin Dance as part of Glenorchy's multi arts festival "The Works". Youth
Rural Health Mural & Garden	\$10,000	Circular Head Rural health Smithton Outer Regional	A community building project which contains three stages- Initial youth mentorship, a mural and a native garden creation. General Population
Deloraine Youth Circus	\$10,000	Arts Deloraine Deloraine Outer Regional	Under the umbrella of circus, the vitality and enthusiasm of Meander Valley's young people will be linked to qualified trainers, mentors and community groups in an ongoing program of creative development. Youth

## LINKS - LONG TERM INCENTIVES KNURTURING SUSTAINABILITY

PROJECT NAME	AMOUNT	RECIPIENT AND PROJECT LOCATION	DESCRIPTION AND TARGET BENEFICIARY
Slipstream Circus	\$20,000	Slipstream Circus Ulverstone Outer Regional	Developing sustainability of Slipstream, the centre of circus in Tasmania through expanding skills, developing repertoire and diversifying partnerships in arts, health and sport. Youth

## RQR - REGIONAL QUICK RESPONSE

PROJECT NAME	AMOUNT	RECIPIENT AND PROJECT LOCATION	DESCRIPTION AND TARGET BENEFICIARY
Song of the Year 2004	\$600	Abbey Doggett Lindisfarne Inner regional	This grant enables Abbey to fly to Lismore NSW to be present for an awards night on the 16th of November, as a finalist in the category of 'Song of the Year 2004'. She will also perform on the night to an audience of about 600. Youth
GAS@ Ausglass Conference 2004	\$525	Maureen Bryan Chasm Creek Remote Australia	To attend the Glass Art society's 35th Annual Conference at the Jam Factory in Adelaide. General Population
The Incredible Hulls	\$1,000	Devonport City Council Devonport Inner Regional	To conduct a workshop to manufacture and tune unusual timber percussion instruments for the Incredible Hulls project. General Population
Wonders Exhibition and Artist Forums	\$1363	Moonah Arts Centre Moonah Inner Regional	Through the work in this exhibition Chantele De Rue will explore the connection of the natural environment with the spiritual side of life and to voice her concerns about the destruction of the natural environment. General Population
North East Showcase	\$1,000	Wendy McLennan Bridport Outer Regional	Community Event, Showcase of Arts, Music, & Crafts General Population
Call my Bluff	\$1,000	Kim Clark Deloraine Outer Regional	Assistance with initial stage of multi-arts community building project celebrating local Quamby Bluff mountain, it's relationship to place through regional cultural development. General Population
CD recording	\$1,500	3 to 2 Upper Burnie Outer Regional	Assistance with production of CD for young regional hip hop music group from Burnie. The artists have been instrumental in developing Hip Hop on the Nth West coast of Tas. Youth
Strand Ephemera in Townsville.	\$1,200	Noela Joanna Anglesey Trevallyn	Noela has been invited by the Perc Tucker Regional Gallery Townsville to install the project Circumjascence in Strand Ephemera 2005 sculpture exhibition. Women

PROJECT NAME	AMOUNT	RECIPIENT AND PROJECT LOCATION	DESCRIPTION AND TARGET BENEFICIARY
The Gisborne Music Recitals & Competition	\$900	Tom Ward Meander Remote Australia	To attend the international Gisborne Recitals in New Zealand. Youth
Beyond TV International Documentary Festival	\$1,000	Heidi Lee Douglas Hobart Inner Regional	Heidi's ten minute film has been selected for screening at an international film festival. With the grant Heidi will fly to the United Kingdom to present her film. Youth
Printmaking Workshop	\$909	Sasha Whitehead/ Janet Ayliffe Ravenswood, Inner Regional	Workshop for specialized technique in printmaking for practicing artists. Women
Showcase & Networking at AIMM	\$350	Tom Vincent Hobart Inner Regional TAG Team	Tom Vincent Trio to perform showcase to approx. 20 international festival directors. Networking weekend. Australian International Music Market in Brisbane July. General Population
The Tasman Trail	\$1,000	Premaydena Outer Regional	Exhibition in Tasmanian Living Artist Week. General Population
Time Place Space 4- Tasmanian placement	\$1,000	Scott Cotterell North Hobart, Inner Regional	Workshops at Adelaide Centre for the Arts. Men
Cygnets Solstice Celebration	\$1,500	Cygnets Community Arts Council Outer Regional	Large and small scale lantern making workshops. Textile and graphics workshop to produce banners. General Population
Kingston Sudanese Community Festival	\$1,000	Kingsborough Council Kingston Inner Regional	During Refugee week, the Kingston community will celebrate the local Sudanese community with film/ video, music, performance and dance. CALD
Flyphoenix	\$1,000	Amy Cutler West Launceston Inner Regional	Recording of original orchestral works. Youth
Moonbird dance Workshops	\$1,000	Jon Hizzard Whitemark Very Remote	To develop a dance to be performed at the Moonbird Festival in October, involving community participants. General Population
World Interplay Conference	\$1,000	Finegan Kruckemeyer Battery Point Inner Regional	This is an international, annual playwrights conference held in Townsville. It brings together playwrights from around the world. Fin has been invited to attend based on a presented script as one of only ten writers and the only Tasmanian at this year's conference. Men
Some Comedians	\$1,000	Alan Moyle Launceston Inner Regional	A collection of photographic portraits featuring renowned comedians from around the world. The works will be showcased at the Edinburgh Fringe Festival. Men
Longlines Masterclass	\$995	Kristen Lang Sheffield Outer Regional QVMAG	To attend a week long Master class and intense program of professional development for writers from regional areas. Women
Colour the Noise	\$1363	Launceston, Inner Regional	A youth dance party, full colour zine and creative marketing strategies, implemented by young people. Youth

PROJECT NAME	AMOUNT	RECIPIENT AND PROJECT LOCATION	DESCRIPTION AND TARGET BENEFICIARY
22nd Aboriginal and Torres Strait Islander Telstra Art Award	\$909	Verna Nichols Glenorchy Inner Regional	To allow Verna Nichols to attend the 22nd National Aboriginal And Torres Strait Islander Telstra Art Awards. Verna is a Tasmanian Aboriginal Elder who has been short listed in the top 5 artists in the Ceramic form. Indigenous
Finalist in Memento Award	\$500	Jim Reece - Art Viva Cradoc Remote Australia	Funding to assist with travel costs to attend the Memento award in Brisbane. Men
Promotion and Marketing of Thylacine Coffee Stencil	\$500	Niecy Brown, Delorane Remote Australia	Travel to Brisbane to attend the Australian Memento Awards as a finalist entrant to market and promote her Tasmanian Tiger coffee stencil product. Women
Improvisation workshops	\$500	Matthews Tyson Launceston, Inner Regional	Workshops designed to upgrade the skills of professional music teacher in Launceston and connect Launceston music teachers with musicians from interstate. Youth

# TRA ROLL OF HONOUR

*Arts Deloraine*

Jane Phillips  
Joanne Wild  
Annie Robinson

*Burnie Arts Council*

Basil Sproule (dec.)  
Dr Donough & Mrs Lucy O'Brien (dec.)  
Iris Graham (dec.)  
Helen Jones OAM & Barry Jones (dec.)  
Jim & Pat Muir (dec.)  
Hugh & Joan Hiscutt  
Tom & Jill Langston  
Jane Tanner  
Pam Thorne  
Ruth Rees  
Alderman Sandra French

*Far South Regional Arts*

Wren Fraser Cameron

*Grassy Bottom Regional Arts*

E'o Greensticks  
Liz Dean  
Jenn Binns  
Andrew Russell  
Ellie Tea-Tree  
David Clemments

*Great Oyster Bay Regional Arts*

Vita Brown  
Jennifer & David Lathwell

*Lighthouse Regional Arts*

Mark Hoban  
Margaret Murray-Williams

*Lilydale Regional Arts*

Leila Robertson

*Southern Beaches Regional Arts*

Michael Hibbert

# PARTNERSHIPS

INITIATED AT THE STATE LEVEL

ABC Radio  
ACROD  
Adult Day Support Service: Gatherings  
Anglicare  
Arts Access Australia  
Arts Action, Tas  
Arts Alive  
Arts Roar  
Arts Tasmania  
arts@work  
Australia Council  
Australian Business Arts Foundation  
Big hART  
Burnie City Council  
Burnie Online Access Centre  
CCD.Net  
Choice Employment  
Clarence Council  
Community Health  
Community Legal Service/Disability  
Discrimination Act Legal Service  
Conservatorium of Music  
Contemporary Art Services Tas  
Country Arts SA  
Cradle Coast Authority  
Department of Health and Human Services:  
Health Promotion Team  
Department of Infrastructure Energy &  
Resources  
Disability Services North  
Drama Tas  
Events Tasmania  
Extreme Team Youth Group  
Family Based Care  
Festival of Voices  
Festivale

George Town Council  
Glenorchy City Council  
Green Corps  
Health Promotion Network  
Home Schooling Association  
Housing Tasmania  
Independent Services  
Interweave Arts Association  
Kentish Council  
Kickstart Arts  
Latrobe Council  
Launceston City Council Parks and  
Recreation  
LIVE Performing Arts Tasmania  
Local Government Association of Tasmania  
Manic Productions  
Meander Valley Council  
Mission Australia Red Heart Project  
Moonah Arts Centre  
Northern Suburbs Community Centre  
Playgroup Association  
Queen Victoria Museum & Art Gallery  
Regional Arts Australia  
Regional Arts Victoria  
Rocherlea Primary School  
Royal Guide Dogs Association  
Rural youth  
Southern Cross Television  
Speak Out  
St Georges  
St Michaels  
State Library of Tasmania  
Student Works  
TAFE Tasmania  
Tasdance  
Tasmanian Community Foundation

Tasmanian A'Cappella Association  
Tasmanian Circus Festival  
Tasmanian Department of Education  
Tasmanian Youth Consultative  
Committee  
Tasmusic  
Tasrad  
Ten Days on the Island  
Terrapin Puppet Theatre  
Theatre Royal  
University of Tasmania  
Viewpoint  
Waratah Wynyard Council,  
West Tamar Council  
Women Tasmania  
Women's Health  
Womens Health South  
Youth Network of Tasmania

# PARTNERSHIPS

INITIATED AT THE LOCAL LEVEL

About Campbell Town Group  
 Academy of the Arts (Inveresk)  
 Adult Learners Week  
 Anglicare  
 Apex club of Smithton.  
 Art Society of Tasmania  
 Artifakt Gallery  
 Artist's Garret  
 Australia Council Theatre Fund  
 Australian Paper  
 Axemans Hall of Fame  
 Bagdad Singers  
 Beyond Blue  
 Bicheno School  
 Break O'Day Woodcraft Guild  
 Break O'Day Council  
 Brighton Heritage Association  
 Bruny Island Community Association  
 Bruny Island District School  
 Bruny Island Historical Society  
 Burnie City Council  
 Burnie Civic Centre  
 Burnie Concert Band  
 Burnie Regional Art Gallery  
 Burnie Shines  
 Burnie Surf Lifesaving Club  
 Burnie Ten  
 Burnie Yacht Club  
 Bus Park Project  
 Campbell Town Swimming Pool committee  
 Central Coast Council  
 Chimera Productions  
 Chordwainers  
 Circular Head Aboriginal Centre  
 Circular Head Cluster of State Schools  
 Circular Head Council

Circular Head Recreation Ground  
 committee  
 Circular Head Rural Health Services  
 Circus Supersillyus  
 City Link (Burnie)  
 Clarence City Council  
 Community Developers Action Group  
 Community Houses Network  
 Community Support Levy.  
 Creative Group, Campbell Town Hospital  
 Cygnet Arts Council  
 Cygnet Living History Museum  
 Cygnet Primary School  
 Cygnet Scouts  
 Deloraine Dramatic Society  
 Deloraine Big Band  
 Deloraine Circus Project  
 Deloraine Community Centre  
 Deloraine Dramatic Society  
 Deloraine Fruit Wine  
 Deloraine High School  
 Deloraine on the Move  
 Deloraine Online Access Centre  
 Deloraine PCYC  
 Deloraine Primary School  
 Department of Education  
 Department of Health and Human Services.  
 Derwent Valley Council  
 Devonport Bookshop  
 Devonport Choral Society  
 Devonport Entertainment & Convention  
 Centre  
 Devonport Library  
 Devonport Regional Gallery  
 Devonport Repertory Society  
 Diabetes Centre

Dodges Ferry Primary School  
 Don Joyce Electrical  
 Dorset Council  
 Dover Craft Group  
 Dover District Fire Service  
 Dover District High School  
 Dover RSL Club  
 Dover Senior Citizens  
 Drysdale Restaurant, Launceston  
 Dunalley Neighbourhood  
 Dunalley Primary School  
 Dunalley Slip and Boatworks  
 e.Scape Gallery & Café  
 ECHO (Student Environment Group)  
 Emu Valley Rhododendron Gardens  
 Europa Poets  
 Events Tasmania  
 Ex-Services Community Club  
 Falmouth Community Centre  
 Far South Community Association  
 Federal FACS- SLAC workshops  
 Female Factory  
 Fingal School  
 Fingal Valley Neighbourhood House  
 Flinders Council  
 Flinders Craft Association  
 Flinders Island Aboriginal Assoc.  
 Flying Teapot Café  
 France to Frecinet Festival  
 Friends of Adventure Bay Inc.  
 Friends of Blue Tier  
 Friends of Chauncey Vale  
 Friends of North East Park  
 Fully Dilated & Pushing  
 Gallery 9 - Deloraine  
 George Town Anglican Church

George Town Watchhouse	Meander Valley Gymnastics club	Rotary club of Smithton
Glamorhan Spring Bay Council	Midlands Multipurpose Health Centre	Rotary Clubs
Glenorchy City Council	Moonah Arts Centre	Rural Health Services
Grassy Bottom Regional Arts	Mountain Heights District High	Scottsdale High
Gymnastics Australia	National Youth Choir	Senior Citizens Club
Haphazard Art Group	New Norfolk Circus	Senior Momentum
Harmony Day	North East Aminya Aged Care	Seniors Action Group, Eastern Shore
Hiscutt family	North East Regional Arts	Sheffield District School
Historical Society of George Town	Northern Midlands Council	Sheffield Visitors Centre
Hobart City Council	Northern Suburbs Neighbourhood Centre	Sidmouth Community Centre
Hobart Womens Health Centre	NW Art Circle	Slipstream Circus
Huon Art Exhibition group	NW Jazz Action Society	Smithton Christian Fellowship
Huon Folk Inc.	Oatlands Community House	Smithton High School
Huon Valley Council	Oatlands District High	Sorell Council
Huonville Primary	Oatlands Open Day Committee	Sorell Library
Illusions Dance Factory	Okines Community House	Soroptomist International of Circular
Interweave Arts Association	Orienteering Association	Head
Jahadi	P.M.T. drama group	Spring Song- Deloraine and Areas Home
Kempton School	Parks & Wildlife	Education Group
Kentish Council	PCYC	St Helens School
Kentish Youth Council	Penguin Market	St Marys Association of Community
King Island Council	Penn. Madness Tonight	Development
King Island Dramatic Society	Piermont Retreat	St Marys Community Health Centre
King of Burnie Hotel	Pitchwater Community House	St Marys District High School
Kingborough Council	Pontville History Rooms	St Marys Pacing Club
Launceston Art Society	Port Dalrymple School	St. Marys Community Health Centre
Launceston City Council	Port Esperance Yacht Club	Stanley Town Hall committee
Launceston College	Queen Victoria Museum & Art Gallery	Stompin Dance
Launceston Festivale	Red Velvet Lounge, Cygnet	Strathcare
Launceston Police Citizens Youth Club	Reece High School Council 50th	Swansea Primary School
Lilydale High	Anniversary Committee	Swansea Review Group
Lions Club	Regional Health	Swansea Town Hall
Little Theatre, Deloraine	Ringarooma Cultural Association	Tandara Lodge (Sheffield)
Local Businesses	Riverside Arts	Tas Jazz
Low Head Pilot Station	Rosebery Christmas Parade Committee	Tas. Community Fund
Marist Regional College	Rosebery Folk Festival	Tasdance
Mary MacKillop College	Rosebery High School	Tasman Artists Group
May Shaw Nursing Home	Rosebery Neighborhood Centre	Tasman Council
Meander Valley Centre for Health and Wellbeing	Rosebery Online Centre	Tasman District School
Meander Valley Council	Rosny Library	Tasman FM-97.7
	Rosny Schoolhouse Gallery	Tasman Gazette

# ARTISTS

Tasman Online Access Centre  
 Tasman School  
 Tasmanian Community Fund  
 The Grange, Campbell Town  
 The Scotts Centre  
 Tranquilles Gallery  
 Tresca Arts Centre  
 Ulverstone High  
 Ulverstone Surf Club  
 Uniting Church  
 UTAS - Cradle Coast Campus  
 Utopia Festivale  
 Waratah Wynyard Council  
 Watch House committee  
 West Coast council  
 Westbury Show Society  
 Wharf Hotel, Wynyard  
 Willow Court, New Norfolk  
 Wilted Quilters  
 Winifred Booth Estate  
 Womens Health and Information Service  
 Workers Union Launceston  
 Yolla District High  
 Zinifex Mine open day

Abbey Doggett  
 Adelio De Borja  
 Ai Utsumi  
 Aileen Holmes  
 Alan Moyle  
 Alanna Sheehan  
 Alfred Franssen  
 Alfred Le Mount  
 Ali Aedy  
 Alison Hart  
 Alison Ling  
 Alison McCrindle  
 Alistair Perkins  
 Alix Berne  
 Allana Sheehan  
 Amy Cutler  
 Anabel Apps  
 Andrea Collinson  
 Andrea Breen  
 Andrew Campbell  
 Andrina Hadley  
 Andy Dunn  
 Angela Paneretos  
 Ann Archer  
 Ann Axleson  
 Ann Kearon  
 Ann Melrose  
 Ann O'Grady  
 Anna Padman  
 Anna Spinoza  
 Anne Goldsmith  
 Anne Ransom  
 Anneke Tame  
 Annette Higgs  
 Annie Beecroft  
 Annie Miller

Annie Robinson  
 Anthony Hales - Muir  
 Anthony Sedoner  
 Anthony White  
 Ashley Hallam  
 Ashley Richelme  
 Audrey Harris  
 Aukje Boonstra  
 Barb Jowett  
 Barbara Simonsen Fischer  
 Barbara Bentley  
 Beau Dudding  
 Bec Reid  
 Ben Tome  
 Benjamin Cordwell  
 Bev Cannell  
 Bianca Archer  
 Bo Boulet  
 Bodhi Aulich-Croll  
 Bradfield Dumpleton  
 Bree Broomhall  
 Brett Muller  
 Bridie French  
 Brigitte Mitchell  
 Britt Steiner  
 Bronte Brooks  
 Bronwyn Purvis  
 Caitlin Burk  
 Caitlin Kilbride  
 Cameron Scott  
 Candice O'Keefe  
 Carol Horton  
 Caroline Amos  
 Caroline Sharkey  
 Carolyn Audet  
 Carolyn Scott-Burgess

Carrie Flevin  
 Cassie Melrose  
 Cate Deak  
 Cate Foley Burke  
 Cath Leith  
 Catherine Griffin  
 Cathy Coupland  
 Celia Player  
 Chantele De Rue  
 Cheryl Wheatley  
 Chris Cowles  
 Chris Flood  
 Chris Luck  
 Chris Phillips  
 Caldwell  
 Chris Riley  
 Chrissie Tanchik  
 Chrissy Sheed  
 Christina Henri  
 Christine Campbell  
 Christina Sonneman  
 Chritty Parker  
 Cindy Clarke  
 Cindy Watkins  
 Clair Burrough  
 Claire Bartholemew  
 Claire Campin  
 Claire Howard  
 Claire McKenna  
 Kranenburg  
 Clare Maddox  
 Corey Floyed  
 Cottage Bird Bath  
 Damian Breen  
 Dan Firgona  
 Dana Douglas

Dane Leonard	Ellie Tea Tree	Gwen Egg	Jeff Jennings
Daniel Langley	Eloise Green	Hank Horton	Jeni Crawford
Daniel Macull-Hillas	Emily Eastley	Hannah Eichler	Jenifer Line
Daphna Yalon	Emma Best	Hannah van Galen	Jenna Blackwell
Darren Gorringe	Emma Parkinson	Harley Tuleja	Jenna Johnson
Darren Willmott	Emma Pryse	Harry Schrepfer	Jenny Gotley
Dave Newlands	Eo Greensticks	Hayley Brown	Jenny Neale
David Bentley	Erin Gleeson	Hayley Cashion	Jenny Pixley
David Gatenby	Erin Smith	Hazel Ryan	Jeremy O'Wheel
David Hamilton	Esther Nunn	Heather Andrewartha	Jess McCrindle
Dawn Yates	Euan Macleod	Heidi Lee Douglas	Jesse Boulot
Deb Dewhurst	Evelyn Gray	Helen Clayton	Jesse Hollow
Deborah Conroy	Fariela Haidary	Helen Gibbs	Jesse Pettigrew
Deborah Wace	Fay Ralph	Hetty Wilson	Jessica Buchanan
Declan Kilbride	Faye Cornish	Howard Whitehead	Jessica Leonard
Deidree McMaster	Felicity Edwards	Imogen Dare	Jessica Wilson
Di Briggs	Felicity Wooley	Ina Thorpe	Jill Cartwright
Di McPherson	Felix Beck-Swindale	Isaac Doust	Jo Imison
Diana Hardy-Wilson	Fermain Milne	Ivan Haynes	Jo Lack
Diana Nunn	Fernando de Campo	Jacinta Hollow	Jo Lynch
Diana Tuleja	Finegan Kruckemeyer	Jacinta McCall	Joanne Wild
Dianne Fifth	Finlay Crisp	Jack Dennison	Joel Squires
Dianne Wood	Fiona Hope	Jacqui Bailey	John Blake
Dominic McSweeney-Braetzel	Fran Burgess	Jamie "Jooms" Clark	John Forbes
Doreen Smith	Frances Joyce	Jamie Pinner	John Gibbs
Dr Astrid Wooton	Frank Jewson	Jan Marinos	John McColl
Dr Deborah Malor	Gai Anderson	Jan Denison	John Murphy
Dwayne Keegan	Garry Gregg	Jane Deeth	John Parish
Ebony Jackson	Garry Shead	Jane Gibson	John Priebe
Eddie Tuleja	Gavin Rigby	Jane Kingston	John Reid
Eileen Brooker	Genia Thupten Lodey	Jane Phillips	John Swindells
Eileen Huddlestone	George de Grassi	Jane Thiele	Jon Hizzard
Elena Gallegos	George Jones	Janessa Nicholls	Jordie McFarlane
Elisya Leon	Giant Steps	Janet Ayliffe	Joseph Pickett
Elizabeth Barsham	Glenda Wise	Janet Morley	Josh Tome
Elizabeth Hodson	Grace Richards	Janusz Chaberka	Joshua Brown
Elizabeth Lester Jones	Graeme Swinsberg	Jarrold Barlog	Joss Thomas
Elizabeth Long	Greg Harrison	Jasmine Santamaria	Judi Joll Jensen
Elizabeth McIntosh	Greg Scott	Jazz O'Farrell	Judith Murray
Elizabeth Norris	Greg Shelton	Jeanie Fish	Judith Reid
Ellen O'Halligan	Gregory Brooks	Jeff Gatt	Judy Astfalck

Judy Bignall	Kim Reynolds	Lynn Hewitt	Neicy Brown
Judy Ellis	Kim Schneiders	Maggie Nicholls	Neil Allen
Judy Hastie	Kimberley Craige	Maggie Wormald	Neil Cameron
Judy Mollineaux	Kip Nunn	Malcolm McMillan	Nick Hall
Julianne Kirkpatrick	Kit Hiller	Margaret Fletcher	Nick Keegan
Julie Alderfox	Klare Payne	Margaret Hayes	Nicola de Rooy
Julie Gorham	Kristen Lang	Margaret Jones	Nicole Johnson
Julie Woods	Kristy-Ann Weeks	Margaret Kvesic	Nikki Lassam
June Tyzack	Kyle Forrest	Margaret Williams	Noela Joanna Anglesey
Justine Outtram	Kyle Stennings	Marie Woolley	Nora Dalla Vecchia
Justine Vaughan	Kylie Eastley	Marita Mangano	Oholyne Hood
Kadey Carroll-Whiteley	Larissa Munday	Marjorie Luck	Paddy Prosser
Kaitlyn Wood	Laura Boden	Mark Hoban	Pam Dhingra
Kali Brooks	Laura Burgess	Mark Lowdnes	Pam King
Kane Peterson	Lawrence Man	Mary Brannigan	Pam Tankard
Karan Jurs	Leah Chettle	Mary Harrington	Pamela Noonan
Karan Lehman	Lee Cole	Mary Powell	Pat Bell
Kareina Day	Len Maynard	Mary Whitton	Pat Burnell
Karen Zabiegala	Leonie Duff	Mary-Jane Vaughan	Patricia Poole
Karissa Rogers	Leonie Hunt	Mathew Baker	Patrick Gambles
Kate Fletcher	Let's MS. Behave band	Matt Garth	Paul Hankinson
Kate Cliff	Liana Forrest	Maureen Bryan	Paula Simpson
Kate Hurrell	Libby Richardson	Mel Bott	Penny Malone
Kate Reid-Clark	Lila Meleisea	Melissa Groom	Petra Meer
Kathie Fama	Lily Blue	Meredith Cole	Phil O'Neill
Kathleen Prescott	Linda Hayes	Meredith Larkins	Phillipa Monk
Kathryn Wensley	Linda Pittard	Merry Flevin	Phillipa Ray
Kathy Hall	Linda Waddell	Mia Barnett	Pieter Zaadstra
Katrina Pakinga	Linia Saddington	Michael Dawson	Pip Stanley
Kay D. Haerland	Liz Francis	Michael McLaughlin	Professor Frank Vanclay
Kay Lincoln	Lizzy Jordan	Michelle McCormack	Pu Lei Ping
Kazakstan Cow Girls	Lloyd Wilday	Molly Bresnahan	Rachael Harvey
Kent Furmage	Lois Bancock	Montannah Spurio	Raewyn Black
Kerryn A. Taylor	Lois Cook	Mr Kubo	Ralf Haertel
Kesheie Guring	Lorraine Biggs	Ms Chris Kitto	Rap n' Tap Sam
Kevin Knowles	Luc Collins	Ms Darshan Carlson	Rebecca Lavis
Kevin Lincoln	Lucy Lewandowski	Mukula McKenzie	Rebecca Rowe
Kieron Robertson	Luka Ulbirsch	Nance Kerr	Rebecca Whatley
Kim Booth	Luke George	Naomie Shaw	Rick Eaves
Kim Clark	Lyn Barber	Natasha Wind	Robert Hannaford
Kim Jackson	Lynette Thrift	Nathan the Dancing Cook	Robyn Carney

Robyn Friend	Skye Newman	Tim Graves
Robyn Matheson	Sophie Piscitelle	Tim McLaren
Robyn Oh	Sophie Whittle	Tim Petrovivi
Rod Pearce	Squiz (James Squires)	Tina Aldridge
Rod Swan	Stacey Claridge	Tina Jaggard
Rose Duffy	Stacey Eastoe	Tom Slater
Rose Osborn	Stephanie Donoghue	Tom Vincent
Rose Tasker	Stephanie Knudsen	Tom Ward
Rosemary Mastnak	Steve Barnes	Tony Bellette
Rose-Mary Pritchard	Steven Tanchik	Tony Eastley
Roslyn Moules	Stuart Baird	Tony Loch
Roslyn Pullen	Stuart Loone	Tony Lock
Ross Byers	Sue Dennis	Tracey Dewhurst
Ruth Perkins	Sue Dollin	Tracy O'Neil
Ruth Sutton	Sue Gray	Trevor Dennis
Ruth Timperon	Sue Khan	Trish Andrews
Ryu Utsumi	Sue McMahon	Trisha Dunn
Saan Ketelaar-Jones	Sue Walters	Tristan Cadman - Gibbings
Sally Warner	Suitcase Circus	Tully Ulbrich
Samuel McKenna Kranenburg	Susan Baulk	Tyrone Stephens
Sandra Direen	Susan Haywood	Val Duncan
Sandra Lancaster	Susanne Hennessey	Vanda Jackson
Sandra Wicks	Suzie Manigan	Vanden McKenzie
Sandy Tiffin	Svenn Joll Jensen	Verna Nichols
Sarah Harrington	Tamara Mason	Vicki Gammidge
Sarah Munro	Tanya Bowerman	Vicki West
Sarina Rideout	Tara Berry	Wade Goss
Sasha Whitehouse	Tara Harrington	Waltraud Klingohr
Scott Cotterell	Tas Trash Transformers	Wanda Orchard
Sebastian Edwards	Taya Ketelaar-Jones	Wendy Brunton
Sebastian Stanley	Taylah Lehman	Wendy McLennan
Shannaye Kettle	Taz Nunn	William Gammidge
Shannon Ager	Teena Gill	Yasmin Oppong-Akuoko
Sharon Jones	Teresa Beck-Swindale	Yvonne Grubitzsch
Sheila Deer	Teresa Bentley	Zach Darley-Collis
Shirley Johnson	Teresa Drodz	Zona Black
Shirley Johnston	Terry Milne	
Shirley Merriel	Tessa Knowles	
Siggy Carl	Themis Wood	
Simon Vanyai	Theresa O'Connor	
Simone Stewart	Tim Cadman	