

WYNYARD SKATE PARK MURAL

Oct 2007 - Continued from project Jan – Feb 2002



Project Description

Young people working with a community artist to design and make ceramic tiles to adorn the Wynyard Skate Park. In addition to providing a creative activity during the school holidays, the aim of the project was also to help young people make a better connection to their town. In 2007, an Indonesian artist worked with the community on another section of the park.

Host Organisation

Waratah-Wynyard Council

Funding sources

Arts Tasmania
Warratah-Wynyard Council

Outcomes

More appealing Skate Park
Community building

Highlights

Having an artwork that enabled young people to have a presence in Wynyard.

Project workers

Richard Muir-Wilson (Community Development Officer)
Christianne Goff (Ceramic Artist)
Russel Kitchener (Indonesian artist)

Keywords

Public Art, Wynyard, Youth

Project Contact

Waratah Wynyard Council
Richard Muir-Wilson T: 6443 8333
rmuirwilson@warwyn.tas.gov.au
www.circularhead.tas.gov.au/

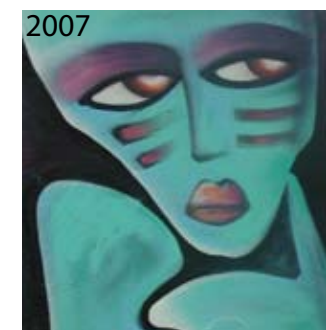
This project began when Christi-
anne Goff expressed a desire to do a
community arts project, around the
same time the skate park had been
completed. It was decided to work
on a feature for the entranceway.
Young people were invited to make
their own ceramic tiles. Participants
were aged 12 – 17, three quarters
were male.

*“The kids didn’t need much
encouragement, they were
pretty keen to make their
mark ... something for
posterity”* (Richard Muir-Wilson).

Tables and drawing equipment
were set up nearby. Designing,
making and firing the tiles took
place over the next few weeks.

*“Some of the designs were
really fabulous ... magazine
quality”* (Richard Muir-Wilson).

The names of all the young people
involved were recorded as part of
the major mural. In Oct 2007, Rus-
sell Kitchener, a mural artist came to
paint the reverse side. This was an
opportunity for this next generation
of young people to make their mark
on the town. So now the Wynyard
Skate Part has an artistic mesh of
Indonesian and Australian cultures.



Images Top to Bottom:

Twin towers, Artists working on the entrance to the
Skate Park, Tulip Festival Wall at Skate Park & Twin
Towers #2. Photographer: Richard Muir-Wilson