

A WORD

LYNNE PRICE,
PRESIDENT TRA

It is hard to believe that another year is almost over and Christmas just around the corner. *Frantic energy* I think is the term that best describes activities within our branches and the powerhouse at Head office in Latrobe. A highlight of recent weeks has undoubtedly been the partnership with Tasdance through the *Hard Yakka* Tour. Their new innovative portable stage has enabled contemporary dance to travel to some extraordinary places. Hosted by TRA Branches and linking with local performers the formula was extremely successful with 1,781 people attending the show at ten venues around the state. Although the wet weather venues were required in several places, from the dancers' perspective the contained space of the audience seating gave them a different energy focus that they enjoyed.

It is extremely important that Tasdance takes performances to these places. Through this tour we were reminded of the palpable energies that exist in regional communities and having the opportunity to work with them makes the exchange special and all the more memorable.
Annie Greig, Artistic Director, Tasdance

Thank you to everyone who contributed in any way to this venture: it really epitomises the role of community arts activities.

In October Lucy and I led a TRA team to host the national Regional Arts Australia Directors meeting in Launceston. Delegates came from every state and the Northern Territory to enjoy beautiful spring weather and a series of programmed meetings. We hosted a reception at the Design Centre to which many arts personnel and local dignitaries came as well as our Board members who were able to attend. It was an aim of mine since becoming a director of RAA to have the opportunity to showcase the Inveresk precinct and many layers of arts infrastructure and practice that exist in this regional city in the hope that our next bid for the National Conference in 2010 can be considered in a more informed context.

Writing of conference, please give serious consideration to spending a few September days next year in Mackay for the Pacific Edge 2006 Regional Arts Australia National Conference. Anyone who has been to one of these amazing events will endorse them as being exceptional motivators, informers and networking opportunities that exist in no other form on such a scale in the country. TRA will send out information regarding travel assistance in the new year but please register verbal interest at any time. We would love to have a strong contingent of TRA members and arts practitioners receiving such an injection of energy and knowledge. (On a smaller scale the flow on from the REAL Event is having similar effect.)

As the year concludes many TRA Branches will be working on ideas for next year. Please remember that there

are now two funding rounds available through the Regional Arts Fund. 17 March (for activities starting 1 July 2006) and 18 August (for activities starting 1 January 2007). These grants starting from \$1,000 up to \$10,000 are targeted at regional community activities and skills building for regional artists.

To any Branch office bearers who are retiring at the conclusion of this year I say thank you for your generous contribution: I hope the experience has been a rewarding one albeit not without its challenges at times I'm sure! With most TRA Branches holding their AGMs in February/March now is the time to start thinking of people whom you could approach to serve on your executive in 2006. I also invite all members to attend TRA's statewide AGM on Saturday the 18 March 2006 at the Moonah Arts Centre.

In the meantime, Season's Greetings to all our volunteers, staff and associates and best wishes for the start of the New Year.



Tasdance *Hard Yakka*
photo: Lucy Kenneth

HAPPENINGS

NATIONAL OZ CO UPDATE - ROS BOWER AWARD ANNOUNCED

Perth-based writer, director and producer, Lockie McDonald is the recipient of the Australia Council for the Arts 2005 Ros Bower Award for his innovative approach to arts and community cultural development in a career that spans more than 20 years. As a community cultural development practitioner, Lockie has led and created arts projects with marginalised groups within rural, regional and isolated communities living under significant disadvantage including high security prison inmates, people with disabilities, Indigenous and homeless youth.

FRANK GETS TOP NEW JOB

Community artists and arts workers Australia wide are delighted to hear that the Australia Council for the Arts has appointed Frank Panucci as its Director, Strategic Development for Community Partnerships. This new position has been created specifically to

drive establishment of the Australia Council's Community Partnerships section; manage the implementation of the Community Partnerships Scoping Study; and develop the Council's long-term strategic framework for community partnerships. Frank's most recent appointment was as CEO of Community Cultural Development NSW.

COMMUNITY PARTNERSHIPS COMMITTEE ANNOUNCED

Community partnerships is an overarching term used to incorporate the Australia Council's wide range of strategies, programs and activities which, in a variety of ways, reflect partnerships developed between communities, between the Council and communities, and between artists and arts organisations and communities. The committee has been established by the governing body of the Australia Council to provide strategic, advisory and policy leadership to the Community Partnerships section. It will have oversight of the Community Partnerships section, initiatives and CCD. The chair of the committee

is Tim O'Loughlin, other members of the committee are Norm Horton, coordinator of Brisbane based Feral Arts and co-secretary of the National Arts and Cultural Alliance; Tiffany Lee-Shoy, regional cultural planning coordinator at the Western Sydney Regional Organisation of Councils; June Moorhouse from June Moorhouse Consulting in Western Australia; Scott Rankin of BighART in Tasmania; Jack Ritchie, executive officer of Arts North West in New South Wales; and Titiana Varkopoulos, a community theatre worker and playwright based in Victoria.

COMMUNITY PARTNERSHIPS ASSESSMENT COMMITTEE ANNOUNCED

The Australia Council's CCD grants programs remain in place for 2006 and all applications made to the programs will be assessed by an assessment committee comprising Tim O'Loughlin, with Tiffany Lee-Shoy as deputy chair. The other members of the committee are David Doyle from Western Australia, Victorian based Malcolm McKinnon, Sally Marsden in Melbourne and

John Voumard of South Australia. The Committee also includes a member from another board of the Australia Council on a rotating basis. Kate Fell, executive officer of Youth Arts Queensland and a member of the Theatre Board, will participate in the first meeting. The committee met on 2-4 November 2005, joined by Peter McKenzie as a peer representing Indigenous interests.

FREE AUDIENCE AND MARKET DEVELOPMENT TOOLS

fuel4arts.com is a wealth of ideas for professional arts marketers and artists. The site operates as an online community with 20,262 regular members from all areas of the global arts and cultural industry. fuel4arts.com is a not-for profit initiative of the Australia Council, the Federal Government's arts funding and advisory body. You need to become a member to access all resources. Membership is free. You can join online immediately. Details: www.fuel4arts.com

THE BLOG IS THE NEW MARKETING TOOL

Thanks to John (fuel4arts bulletin board) we found out more about this new marketing phenomena.

What is a blog? An online journal or log of thoughts and opinions published in reverse chronological order and regularly updated on a web page, also called a Weblog. A blog is unedited, uncensored and unlimited in scope. It is generally the online publishing of writing on any topic that is regularly updated to create a dynamic log of an experience, opinions or events. Most also allow for free comment and discussion in real time for visitors to the site. Blogs cover every topic imaginable - if someone thinks it's worth talking about there's bound to be a blog out there about it! . So how do you blog? Find a blog hosting service, Choose your domain name (i.e. www.yourname.com), Personalise your site - select design and template options for your blog, Create your content - write your text, Publish your blog - one click and you're published (You can also send content directly from email to blog or even your mobile phone).

Details:www.smartyhost.com.au

THE PACIFIC EDGE TASSIE MANIC

The 2006 national conference of Regional Arts Australia. The Pacific Edge will be an opportunity for delegates from all over Australia to gather and find inspiration in the coastal city of Mackay in North Queensland. It will be an opportunity for performers, actors, musicians, artists, writers, volunteers, artworkers, local government staff, academics, students, arts researchers and the wider community to gather in Mackay to discuss, celebrate and experience the arts and cultural achievements of regional arts groups throughout the country. Details: TRA or Rebecca Atkinson - Conference Co-ordinator T: 07 3846 7500 or E: info@qac.org.au



Pacific Edge

A new shop is being set up by Manic Productions in Launceston's Powell's Arcade near the Metz, due to open unofficially early December, with official opening in late January. It will showcase young artists' work and sell a range of funky stuff! Manic is also presenting work by young designers at the Falls Festival at Marion Bay. Contact Joseph Pickett on 0424 967 793



*Joe Pickett, Manic Productions
photo: Karlee Foster*

ARTS ACTION, TAS APPOINTS INAUGURAL MANAGER

Marianne Taylor has been appointed as the inaugural director of Arts Action, Tas. Marianne will be based at the Moonah Arts Centre and work with a diverse range of Disability and Arts Organisations state-wide. TRA are proud to be supporting this position through our program funding from the Australia Council, other supporters include Arts Tasmania and Glenorchy City Council, through the Moonah Arts Centre. Contact Marianne Monday - Wednesday from 9am - 5pm on 6214 7634.

HAPPENINGS

continued

TOC ON THE GO!

Theresa O'Connor, along with Nicole Jobson and Darren Willmott, won is theatre's "Flip Top Heart" 05 award; \$1,000 prize for a short production with their piece "Little - passionate and young". Toc has been very busy of late as tech for the Tasdance "Hard Yakka" tour and also been awarded a grant from Arts Tasmania to attend the Zen Zen Zo Stompin Ground Summer intensive.



Toc As Tech!
photo: Lucy Kenneth

NEW TYCC OFFICER

Farewell to Shona and Welcome Ben Mackay to the position of project officer with the Tasmanian Youth Consultative Committee. Ben hails from New Norfolk and has just completed a degree in media and politics.

Details: tycc@tycc.org.au

BLUES 'N ART IN THE VALLEY OF LOVE

Derwent Valley Regional Arts presents original artworks & rockin' blues band Monkey Nerve 12-4pm, Sat 10 December, Derwent Valley Regional Arts Centre, behind the Nosh Pit, George Street, Willow Court, New Norfolk. With your support, we hope to make this an annual event for the Derwent Valley.

Details: Kylie 6261 3349 or Natasa 0438 526 004

LATROBE HALL UPGRADE

Substantial funding has improved the facilities at the Latrobe Hall in NW Tasmania. Situated 10 km south of Devonport and 40 km north west of Deloraine, the town is easily accessible for a wide range of activities. The main hall is huge with the option of dividing the space into 2 areas with heavy curtains. There's a stage with dressing rooms, mirrored walls with ballet barres, multipurpose lighting and a new sound system. The adjoining supper room is extensive with a well appointed industrial kitchen. This will be a great venue for touring shows and a flexible space for workshops and forums. Congratulations to Latrobe High School and Latrobe Council for initiating and managing the upgrade.

NEW WEBSITE

The Moonah Arts Centre has a new website if you have any comments about the site please let us know. We are working on the Recent Highlights which will showcase films, concerts, exhibition and workshops over the last thirteen years of Moonah Arts Centre. Details: www.mac.gcc.tas.gov.au

AMPT - YOUNG ARTS MANAGERS

TRA in Partnership with TYCC (Tas Youth Consultative Committee) will be rolling out youth arts forums in February 2006. Forums will be held in Hobart, Launceston and Burnie, leading to a state wide event as an element of the Streets Alive youth arts festival in Launceston during Youth Week 2006. The forums are aimed skilling up young people who want to run community based arts projects in their communities.

Details: Karlee @ TRA

FEATURE

AN ISLAND LIFE

COMMUNITY CULTURAL DEVELOPMENT PROJECT 2003 - 2005

LUCY KENNETH
EXECUTIVE DIRECTOR TRA

Devised by then TRA Director Siobhan Reid in 2003, An Island Life was funded through the Australia Council and the Regional Arts Fund. The project was facilitated by leading South Australian Community Cultural Development worker Cath Cantlon up until 2004. An Island Life looked to give voices to different issues that communities face through a diverse range of art forms. Island Life projects were run in Swansea, Launceston, Meander and Dover.

The broader project aims of An Island Life were to: To consolidate excellent CCD practices by Tasmanian artists; to raise community awareness of the benefits of inclusive process & to create outcomes that can be built upon. In total: 62 artists were employed, 27 partnerships developed, 1,278 people participated and 7,378 attended events. Project outcomes are continuing to unfold as travelling exhibitions, CD Roms and music CD's have either been developed or are in stages of development.

As you will have a chance to read later An Island Life resulted in some fantastic achievements in terms of partnership development, skills

building and increased awareness for community based arts. I think it is important to say that whilst An Island Life was amazing in many aspects it was not all smooth sailing and nor was it as ever meant to be. Utilising an arts based process to work across divided communities is a difficult and involved process that requires a long term investment, more than can be achieved in one project. Of the four projects undertaken two centred around issues that were of common concern across much of the community; Swansea - water quality and Launceston - disability awareness. These issues weren't so much divisive as in need of greater public awareness and debate. The other two projects run in Dover and Meander were focused on celebrating the history of particular places, however pre-existing issues over land use at these sites proved so strong that the projects themselves became divisive in trying to involve opposing sides of the communities.

I wanted to thank all those community members who supported An Island Life and to especially thank Cath, Siobhan and our visiting mentor arts workers Trevor Wren and Robin Laurie. But

most importantly I wanted to thank the community coordinators and local artists who worked tirelessly and sometimes without ease to make their local communities aware of what it is to be part of this Island's Life.

THE TAP PROJECT

DONNALEE YOUNG

LOCATION/S:

Glamorgan/Spring Bay Municipality including the townships of Buckland, Orford, Triabunna, Swansea, Coles Bay and Bicheno.

COORDINATION:

The Great Oyster Bay (GOB) Regional Arts group with Project Officer Donnalee Young and filmmakers, Kim Schneiders and Kim Reynolds.

The TAP project theme of 'Water in Our Island Lives' aimed to raise the issue of water use and abuse and solutions through the arts. This area has a growing tourism industry, but severe water restrictions over the summer months. There are true stories of elderly women showering over buckets to save their gardens whilst others use overhead sprinklers in the middle of the day. The name TAP was used to literally represent a tap but also as an acronym for 'Take another Perspective'. Over a 12 month period a range of community initiated workshops and events incorporated a wide range of art mediums including: film, photography, mosaics, pyrography, quilting, limericks, comedy skits and even songs.

IMPACT:

The project has built on the development outcomes of the 'Sea Chant' Opera and 'France to Freycinet Festival'. It has further improved integration and dialogue between the townships not only on the water dilemma. There has been an increased sharing of creative opportunities and skills in our municipality, particularly through the workshop series. The public events were social with people from across the municipality celebrating local artistic talent. These events helped us to further discover and celebrate who and where we are. It has empowered more people in the community to participate in the arts in their everyday lives.

COMMUNITY & ORGANISATIONAL INVOLVEMENT:

The Great Oyster Bay Regional Arts Group led the project. An early visit by Cath Cantlon from SA generated some ideas. Jenny Lathwell, the President at the time, felt strongly about the need for a project officer. Donnalee Young was invited to take on this role along with Kim Schneiders for the filmmaking and teaching. Individuals and existing groups contributed in a variety of ways to the theme. For example, 'The Which Stitches' in Triabunna and the CWA in Swansea sewed wall hangings, Molly Greaves from Coles Bay created a limerick competition for Easter, all of the Primary Schools painted tap tags to hang off taps to remind people to save water, Swansea Primary School also

created a large mosaic wall with artist Jeni Crawford, another class created a wave mural with staff support.

Six artists from across the municipality each developed a workshop series on the theme. Fermain Milne - Hebel Sculpture, Kip Nunn - Photography on Water, Paula Simpson - Sails, Flags and Windssocks, Terry Milne - Pyrography, Eileen Huddlestone - Water Effects using Watercolours. Glamorgan/Spring Bay Council helped to fund the launch and made the community halls free for all TAP event use. Two film staff from Launceston College, Kim Schneiders and Kim Reynolds worked with 11 young people to create the TAP documentary. Throughout the filming another 50 or more local people were involved in telling their stories about water on the east coast.



Tap Su and Vodka
photo: Donnalee Young

BIG PROJECT SUCCESS:

The TAP project managed to achieve almost all of what was hoped for within a tight budget and timeline. This would not have been possible without the experience and passion of the project officer and filmmakers. Together with the Great Oyster Bay Regional Arts Committee they were able to stick to a plan of action whilst encouraging creativity, flexibility and experimentation. The impact of the project was captured in the Grand TAP project exhibition event in the Swansea Town Hall where all of the aspects of the project were on display including the film. Over 120 people from across the municipality attended and were amazed at the variety and quality of the work. A highlight was the 'Von Tap Family Singers', better known as 'The Spring Bay Singers', who sang a range of watery songs. The stars of the documentary, puppets Su and Vodka, launched the evening. The young film crew were presented with golden tap awards for their work. People dressed up in the watery theme. A Community member said, "it was the best night's entertainment I have ever had in Swansea".

BIG PROJECT CHALLENGE:

This was a Community Cultural Development project so from the onset GOB wanted local people to develop and work on their own ideas. The water issue was so big and passionate it was hard initially to channel energy towards collective project ideas. We needed to find some common ground projects to get started. People had many great ideas, some practical and some not so. Others wanted to do their own thing, existing arts groups wanted to contribute by continuing to work on their specific areas of interest, others

wanted to be told what they could do. This initial period was creative and chaotic which was essential but also stressful due to time and budget constraints. The project team developed some order and urgency around this by setting out specific events to work towards. One challenge we missed was to set up an evaluation plan at the onset of the project!

The Tap Mosaic
photo: Donnalee Young

**FUTURE ACTIVITIES:**

An unexpected outcome of the project was the development of the Great Oyster Bay Regional Arts Group. There are now additional committee members from 'the south' and new fresh faces driving a progressive and diverse program of the arts for our community.

ART AND HISTORY

WREN FRASER CAMERON

LOCATION/S:

Recherche Bay, Dover Old School Gallery for Tasmanian Living Artists Week, Wildflower Expo Hobart City Hall, South Recherche Beach Cockle Creek, Australian Wooden Boat Festival, Walk for History Recherche Bay, Rally for Recherche Bay Parliament House lawns.

COORDINATOR:

Wren Fraser Cameron, President Far South Regional Arts

This Project focused on the cultural historic landscape of Recherche Bay and the 1792 and 1793 visits of the French Scientific Expedition of Bruni d'Entrecasteaux in search of lost French hero La Perouse. Far South Regional Arts worked on the project for 15 months and although it has been challenging and topical felt the community acceptance and support grow as the project progressed. The project started being filmed during Tasmanian Living Artists Week at the Dover Old School Gallery with Art in Conversation discussing the enlightenment and making art in the Far South focussing on the impact of the French and the landscape on artistic endeavour. Also The Recherche Baybes conducted singing and song writing workshops with Dover District High School students. As a back drop the gallery hosted an art exhibition called *In the French Garden* - a Big Day out with d'Entrecasteaux. A 2005 calendar was produced showcasing the landscape of Recherche Bay, the historic charts produced by the

d'Entrecasteaux expedition and the artistic response to the history and landscape.

The project included Art & History on the Beach where over 300 people gathered on South Recherche Bay in adverse weather, nothing a lot of local old salts couldn't handle though! This artistic exploration of a cultural historic landscape included French / Aboriginal Cultural exchanges based on the significant friendly exchanges between the French expeditioners and the local Tasmanian Aboriginal people the Lyluquonny. Scenes from the play 'The Strange Journey of Louise Girardin' were performed including a duel on the beach. A Science in Conversation forum

was held with a variety of speakers, experts in their field of science, outlined the scientific importance of the French expedition. A botanical artist worked on the beach and there were sand sculptures and driftwood painting for children. A painted diorama of the French and Aboriginal people in Recherche Bay was placed on the beach with cut-outs for faces so people could put their own faces in the picture. This was very popular and was subsequently placed at the Australian Wooden Boat Festival. The Recherche Baybes made a number of appearances at events for Recherche Bay that were also filmed for the DVD. These included the Walk for History attended by 1,000 people and the Rally for Recherche with over 5,000

Whale Singers
photo:



in attendance. The project will culminate in an educational DVD on artists exploring and responding to the cultural historic landscape of Recherche Bay and a CD of the Recherche Baybes a mock 18th Century trio with cello, singing about the d'Entrecasteaux Expedition.

IMPACT:

For all involved in the project the benefits were enormous in terms of professional artistic development. All audiences were very appreciative and delighted in the colour, costume and props, performance and the wide variety of artistic endeavour. In terms of focussing on the political issues that held the key to the fate of the historic landscape the campaign went from grass roots to global supported by the website www.recherchebay.org

COMMUNITY & ORGANISATIONAL INVOLVEMENT:

Far South Regional Arts.

As the project host organisation FSRA members found that the project took over their lives for nearly 15 months. This was a BIG effort to keep focus, maintain networks and deliver outcomes. Tasmanian Aboriginal Community members: Dancers and musicians from the Tasmanian Aboriginal community contributed to the Art and History on the beach day through performance and re-enactments of the friendly cultural exchange with the French in 1792.

Dover District High School: Students from the DDHS participated in a song writing and dance workshop with the Recherche Baybes and three Year 10 students were mentored by the filmmakers and with digital video cameras helped film Art & History on the beach. Southport Volunteer Fire

Brigade: The Brigade Captain and five volunteers managed the logistics of parking and security on the Art & History on the Beach Day. Recherche Bay Protection Group: A community based organisation formed to respond to the imminent wood chipping of the historic site at Recherche Bay helped in innumerable ways with the group historians and scientists providing the vital research needed to back the facts of the issue. Far South Community Association: Running the Old Dover School and Dover Online Centre and as publishers of the monthly Dover Bush Telegraph, FSCA contributed person power, IT support and subsidised printing and promotion. Port Esperance Sailing Club: PESC contributed on water support, logistics and patrol for the Art & History on the Beach event. Tasmanian Living Boat Trust: The TLBT with the completion of a replica whaleboat launched their longboat at the Art & History on the beach day and then undertook an epic 7 day row up to Hobart for the Australian Wooden Boat show.

BIG PROJECT SUCCESS:

The wide range of Artistic expression in response to the cultural historic landscape of Recherche Bay and the French Scientific Expedition of 1792-3 was overwhelming.

Art included pottery and ceramics. oil painting, watercolour, driftwood art, collage, silver jewellery, botanical art, song, dance, music, costume creation, acted performance, stand up comedy and satire, cartooning, photography, digital film making, poetry, story and art in conversation.

Artists in the project had exhibitions at the Old Dover School Gallery, Sidespace Gallery Salamanca, Art & History event

on the Beach and at the Wildflower Expo at Hobart City Hall [the art of flower pressing and framing]. The recording of the Recherche Baybes CD was an important outcome for the professional development of the group.

BIG PROJECT CHALLENGE:

The biggest challenge was being courageous enough to take it on and see the distance. There was some community aversion to being involved in a project that was controversial. As the fate of the historic cultural landscape was tied to the Tasmanian forest debate it is inevitable that in Tasmania feelings would be strong on both sides. Some participants felt intimidated by the pro forestry negativity towards what the project was trying to achieve - mediating a divisive issue within the community through art - and as a result support for activities waxed and waned depending on how 'safe' people felt. Also as the focus on Recherche Bay grew global our 'little' project at times was under the spotlight with much media interest. Our project was covered by radio, TV, film crews, newspapers, magazines, overseas historians, botanists, scientists and the www.

FUTURE ACTIVITIES:

The Recherche Baybes are further developing their performance package to include touring in 2006 with a theme exhibition showcasing the project. The DVD will be available to other Regional Arts groups to inspire them to take up big issues artistically.

THE GATHERINGS

JENNI SHARMAN

LOCATION/S:

Northern Suburbs: Launceston

COORDINATOR:

Jenni Sharman

The Gatherings in Launceston was an accessible arts project aimed at strengthening the relationship between Disability Services' Adult Day Support Service (ADSS) and the schools and community centre in the northern suburbs. This was achieved through a six week series of inclusive art workshops utilising materials found on site and facilitated by artists Sieglinde Karl (mandalas), Vicki West (fibre weavings), Ralf Haertel (natural dying) and Daphna Yalon (earth based sculptures). These workshops culminated in an ephemeral community installation and celebration.

IMPACT:

The project was most successful in introducing members from the Adult Day Support Service to the broader Northern Suburbs community. Communication between organisations has continued with the ADSS now accessing the Northern Suburbs Peace Garden. Plans are also afoot to regenerate the ADSS orchard with assistance from the community. Most importantly students involved in the project were able to articulate a distinct change in attitude towards people with intellectual and physical differences.

COMMUNITY & ORGANISATIONAL INVOLVEMENT:

Students from Rocherlea Primary School, Brooks High School, Student Works, Greencorps, members of the Northern Suburbs Community Centre, Arts Roar members/volunteers and clients and staff from the Adult Day Support Service took part in the project.

BIG PROJECT SUCCESS:

The Gatherings Project was about opening up the doors of the Adult Day Support Service to the broader community in order to invite further connection and communication. This aim was achieved with continued collaboration between the organisations involved in the project. Gatherings was also about utilising the medium of the arts to introduce students to the

concept of physical and intellectual difference. Staff from the ADSS were particularly pleased with the project outcomes, with the following comments made in evaluations:

"I learned that all community members can work together and that integration of people with disabilities is possible"

"Made me think we can do many more projects like this in the future"

"Confirmed my belief that wonderful things can happen"

"It has definitely changed my attitude toward art"

The artwork produced was of a high quality and distributed around the community organisations involved in the project. A set of silk banners is also now being shared for installation at community celebrations.

Gatherings
photo: Jenni Sharman



BIG PROJECT CHALLENGE:

The project ran smoothly with the only real challenge being the early attitude of a small number of the younger students to some of the ADSS clients. Adult Day Support Services provides support for clients with high degrees of physical and intellectual disability. Meeting such a diverse range of people can be confronting and some students were initially uncomfortable. Once given the opportunity, in one on one conversations to express their unease, students displayed a high degree of maturity and acceptance. Students from Rocherlea Primary School commented at the end of the project:

> “[I now] know people that are different, they are like you”

> “Respect people even if they are different”

> “Working with people with disabilities was a different experience, but I am more comfortable helping people with disabilities”

FUTURE ACTIVITIES:

At the conclusion of The Gatherings a meeting was held with all services involved. A commitment was expressed to continue the connections established through the project. This desire has evolved into the Northern Suburbs Peace Garden dedicating space to the ADSS clients and plans for future community collaboration in restoring the ADSS orchard.

MEANDER SCULPTURE

REBECCA ROWE

LOCATION/S:

Meander

COORDINATOR:

Rebecca Rowe & Kim Clark

‘Meander, near the great Western Tiers, was the site of the first front line protests over logging in Tasmania... The creation of a public art work for Chapel Corner would address the history of the community as well as its geography the difficult past and the difficult future in terms of tensions over environmental issues would have to be addressed... there is a willingness at this time to explore the tensions of the past and to create something new and positive for the future together’ (funding application 2003)

I was originally introduced to the ‘An Island Life’ project in Meander when I was contracted as the artist to be mentored by Trevor Wren from SA as the project began in 2004. From its inception, the process was a difficult one, with the community unable to come together to agree upon an artwork or to work either together or with the artists. With a complete mistrust of us, and resentment towards Trevor having come from the Mainland, we had our first stumbling block, which was followed by the resignation of Siobhan Reid, the then Director of Tasmanian Regional Arts, which led to the project being left in stasis until 2005.

When asked to co-ordinate the project earlier this year, I had some reservations as to our success, but agreed to take the project on when I was offered the support of Karan Jurs to facilitate the first meeting to get the ball rolling again. This first meeting in April of this year seemed to have a balanced representation of the existing factions of the community, with an agreement to go ahead with the project. I had also invited local artist Kim Clark to share my role, hoping that he being a member of the community would assist in gaining further contacts and support of the community for the project.

Out of this meeting we brainstormed ideas and concerns of those present, coming out with themes that reflected the environment and history of the region. Kim and I then took these ideas away and came up with a series of ideas for an artwork, which we took to a few more meetings, finally coming up with a design to be presented and voted upon. We had a difficult time trying to steer the community towards a design that had artistic merit and represented a history that wasn’t biased towards a pioneer settler’s perspective. These meetings were often uncomfortably aggressive, with some members of the community actively blocking any progress towards the project coming off the ground.

IMPACT:

Steering away from the raw nerve of the conflicts existing within the community,

we came up with a design that focused on the pre-history of the region. The valley was once a lake bed and reveals fossils in its soils and rocks. We decided to use the natural rock of the region to build a spiral wall reflective of the nautilus shell, which would have a series of cast concrete pictographs on the top surface depicting a timeline from the last ice age to early settlement - so that we could be inclusive not only of the environment and present culture, but also of the prior indigenous peoples' presence within the region. Eventually the design was agreed to.

COMMUNITY & ORGANISATIONAL INVOLVEMENT:

Our aim was to connect with the general community as much as possible and we did this by offering workshops with Meander Primary School to engage the children of the valley and to hopefully make that extension through them to their parents. The Principal and teachers of the school have been totally supportive of the project, offering support and space to run workshops, and adapting classes to make students available for the workshops, with almost every one of the 62 students participating in the design process for our image tiles. Unfortunately we have not had the same success with the broader community of adults.

BIG PROJECT SUCCESS: Kim has managed to rally up some individuals from Jackeys Marsh and one or two local farmers to collect and transport rocks for the wall construction in the last month - marking a step forward in our aim of bringing the community together. With support of

the Parents and Friends association of the school we have received a Meander Council for a \$1,000 community grant to assist with materials costs. The Council also agreed to lay our foundations for us. Our consultations with Council so far have been very positive with approval of the overall design received and a feeling that the work is an asset to Meander Council and the region overall.

BIG PROJECT CHALLENGE:

Though there are individuals within the community who wish to see this project achieve its end goal and have been supportive of the process, on the whole it has been a battle to bring the community together to create the work, or the potential outcome of a less divided culture. The process on the whole has been frustrating and I have more than once questioned whether the

Meander Community ever really wanted this project, or understood the aims of the original submission. The rock collecting day has been one of the more positive so far, and we are optimistic that there is still the possibility of greater enthusiasm once we are physically on site and therefore more visible to the broader population. Many have expressed interest in the masonry skills, and we are hopeful that we will then muster a crew to assist in casting the students' designs as image tiles. Our aim was to have the work finished by the end of November, but due to both weather constraints and delays with council, it will be more likely to be mid December at this point.

I am still hopeful that not only ourselves but the community of Meander will walk away from this project proud of their achievement, of the art work, and of their ability to work together for a common aim.

Meander Design



PROFILE

LILA MELEISEA

Community Musician, St Helens



Lila
photo: Patrick Roland

Tasmanian born Lila graduated from the Victorian College of the Arts in 1997 and has played with a number of ensembles including the Tasmanian University Wind Orchestra. Lila has performed extensively in Australia and overseas including Brazil, Thailand, UK and New Zealand. In Brazil she worked with street children in Salvador alongside artist in residence Domenico de Clario. She has a passion for working with ethnic instruments including African kora and mbira, percussion, experimental instruments and electronics.

Lila has taught in schools and undertaken many projects as a musician and community artist. She currently lives on the east coast of Tasmania where she helps coordinate the Winter Festival. She also performs with the Chordwainers, a music group featuring the leather instruments of the late Garry Greenwood.

In 2004, Lila was mentored by Melbourne based Samoan group Sunga over a twenty day period. This project allowed Lila the opportunity to learn

12 songs from Sunga's repertoire. She was able to contribute the voices of the kora, kalimba, saxophone and vocals to Sunga's sound and by doing so, became the third musical voice of the group. As a trio, Sunga have since recorded a demo CD and performed regularly at festivals in Aotearoa and also in Melbourne, Tasmania, New Caledonia and France. They have also received a Professional Development Grant from the Australia Council to work on their debut album.

"The outcomes of this project have all been positive and include enthusiastic audience responses and invitations to festivals. The project has also assisted me in a new understanding of my own Samoan heritage and Tasmanian upbringing; it has challenged me to see and feel how I may fit into my dual identities " Lila Meleisea

In 2004, Lila developed the Out of the Blue project with visual artist Lorraine Biggs. 'Out of the Blue' was a visual and sound collaboration based at the Blue Tier in the North East. It provided the artists with the opportunity to work together and draw inspiration from their local environment. Lorraine worked with painting and drawing mediums and Lila worked on a musical exploration of the environment of the Blue Tier. The work ended up being exhibited a number of times, including at the Burnie Regional Art Gallery during Ten Days on the Island . A CD and booklet have been produced as

a result of this exciting and productive collaboration.

In 2005 Lila and Lorraine again teamed up with the Kodama Forest Installation. Located near Blue Tier they placed sound sculptures on a walking track leading to Suikinkutsu - Japanese underground water harp that was installed by visiting international artist Mr Kubo from Kyoto, Japan. Dr Kumi Kato from the University of Queensland and the Japanese environment students (ECHO) group from Hobart were also involved. In total 70 people attended the final ceremony in the forest. "Lila's composition went down really well as a 20 minute piece with 6 musicians to accompany the installed Suikinkutsu. We even had currawongs joining in for the final sound recording." Lorraine Biggs

In July 2005 Lila participated in the 'Maps of the Imagination' event at the Queen Victoria Museum and Art Gallery as an element within the inaugural Festival of Voices.

Recently Lila has secured support from Arts Tasmania and the Regional Arts Fund to undertake a residency in the Queensland community of Mackay in The Pacific Edge - 2006 Regional Arts Australia conference. The residency will develop a body of new work through site specific sound installations drawn from the dynamics of the building's acoustics and surrounding natural environment. Lila plans to develop new work by recording soundscapes, and composing instrumental pieces. She will perform the new works in the gallery using the acoustic ambience of the space with appropriate visual elements. While in residence Lila will work with the South Sea Islander and wider community, in particular young people.

ARTS 2U...TOURS

TERESA BECK-SWINDALE
CULTURAL / TOURING OFFICER,
TRA

In 2006 TRA has selected a range of tasty touring delicacies for you to choose from with a mix of artists from Tasmania and interstate. The itineraries are currently being developed and will be finalised early in 2006. The aim of the Arts 2U program is to offer regional communities contemporary, engaging and entertaining works, whilst encouraging participation and audience development. The performing arts program boasts an outstanding line up of eight products which includes international stars of the classical world the Australian String Quartet and Australian comedy icon Rod Quantock. TRA will once again support artists from our home state with three tours of Tasmanian performing arts product. The Visual Arts program will tour six exhibitions delivering an assortment of well loved annual favourites such as the *Material Girl* exhibition and will showcase exciting new artists in the *Art Ability* exhibition. This year the touring program also provides a great opportunity for workshops with Tasmanian and visiting artists.

PERFORMING ARTS

CIRCUS RISQUÉ

Back after their successful 2004 statewide tour, Tasmania's very own Circus Risqué set their sails in a new circus extravaganza. Fall into the magic of their 2006 premiere season where 3 clowns brave the seas in a sail boat built for mayhem. Kooky clowns, eye catching illusions, and plenty of circus antics, Circus Risqué is guaranteed to dazzle and amaze. Skills include boat chaos slapstick, illusions, juggling, handstands, acrobalance and a variety of other circus skills. Show Premiere season is for the 'Taste of Tasmania' 28 Dec 05 - 8 Jan 06 in Tony Rooke's travelling tent venue "The Sideshow Paradiso".



CANCELLED BY POPULAR DEMAND

"Challenging comedy home grown in Tasmania" Catch this intimate show direct from the Hobart Summer festival before it heads off to the Melbourne International Comedy Festival in April. Devised and directed in Tasmania, this black drama throws out a challenge to humanity with a weird storyline about a zebra and Robert De Niro. Jeff Blake plays three characters in this one man sensation directed by Ian Pidd which filled Salamanca's Peacock Theatre in its 2005 season.



CULTURE IN TRANSIT - TRA BUS TOUR

"Catch the TRA bus to Hobart or catch the special Bruny Island sailing"

FRIDAY - Catch the Bus leaving from Burnie at 2pm March 17th 2006 to arrive for the 8pm performance of Sydney Wharf Revue at The Theatre Royal. "Spot-on satire...sharp, funny, fast, rude and bullseye hits." (The Sun Herald). The Wharf Revue Team has been placed under arrest without charge. No-one and nothing is sacred from the irreverent gaze of the outrageously talented cast.

SATURDAY - 12pm - TRA Annual General Meeting - Moonah Arts Centre - Next big thing... bring your ideas on a focus for TRA in 2007 and beyond.

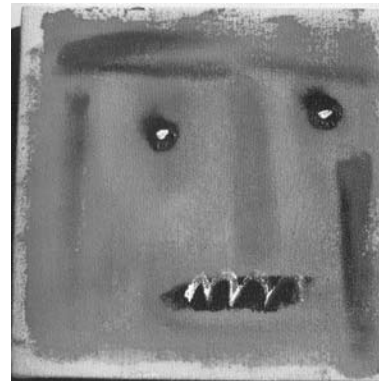
Ode to Joy - Port Arthur - 6pm - Shared BYO Picnic & Free entry to site 7pm - TSO - Port Arthur Historic Site - Seating - Bronze Reserve - BYO rugs (in front of penitentiary @ side of reserved seating) The convict-built walls of Port Arthur echo with Beethoven's passionate cry for justice and freedom. This last and greatest symphony from one of the greatest composers of all time unleashes the awesome power of massed choirs, a stellar lineup of soloists, and the brilliance of the Tasmanian Symphony Orchestra under the baton of dynamic Chief Conductor Sebastian Lang-Lessing. And to launch this magnificent evening, Tchaikovsky's triumphant 1812 Overture, complete with full chorus, bells and cannon. An explosive evening - with fireworks to finish! Concert-going will never be quite the same again.

Cost: \$80 (TRA members) \$100 non-members this includes return bus fare (returning Sun am.) You will need to arrange your own accommodation. For more info: www.theatreroyal.com.au & www.tso.com.au

ONE DAY PLAY SERIES

The Australian Selection "Edgy, contemporary theatre by Tasmanian dramatists and emerging theatre practitioners" 5 of the best one act plays devised for the One Day series as presented at the Earl Arts Centre over the past 2 years. 'One day' gives actors, script writers and directors 24 hours to write, rehearse and perform a short play. This regional series will follow a one night extravaganza at the Earl Arts Centre on Sat April 22nd 2006. The opportunity to work with Stuart should be seized by anyone looking for an adventure in creative thinking, diverse theatrical design and innovative solutions. Everyone who participated in his workshop at the Real Event was enthused and inspired to take the concept of 'fast drama' back into their territory. Only a very few of these one day workshops can be offered so consider slotting this into your calendar as an adjunct to the performance,

included in Art Ability have been developed in workshops attended by over 50 artists from Multicap's Serpentine Gallery and Studio (Burnie), Arts Roar Accessible Arts Project (Launceston) and Cosmos Incorporated (Hobart). The Art Ability exhibition has been developed by Tasmanian Regional Arts in partnership with Arts Action, Tasmania especially for touring to non conventional venues in regional communities where there are limited opportunities to experience contemporary art.



Art Ability *Were Wolf* by John Virtue

VISUAL ARTS

ART ABILITY

Works by Tasmanian Artists "fresh, contemporary works...a visual feast" *Art Ability* is a standout exhibition of contemporary works by practising artists who have a disability. These vibrant works signify that people with differences are making a unique and exciting contribution to contemporary art practice in Australia. The works

THE KNITTING ROOM

Strathaven Home

"Colourful, imaginative, quirky and packed with friendship, fun and memories. "If you are surrounded by knitted food and wine bottles, a knitted radio, knitted bricks and picket fence and knitted children and dogs, crocheted cups and cakes, rugs, flowers and wall hangings, woven wall paper and carpet squares, 'scrumbled' furnishings and huge collages of the Huon Valley and Oatlands, then you must be in The Knitting Room. The

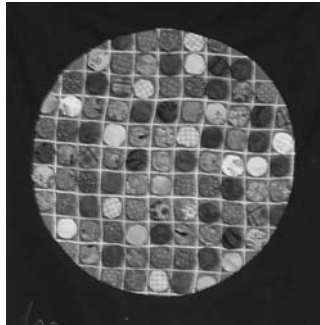
ARTS 2U...TOURS

Knitting Room was originated through discussions with the residents of Strathaven, a residential care home for the frail aged. They sought a way of turning their practical skills in knitting, crocheting, weaving and stitching into a physical expression of their memories. Their thoughts turned especially to the post-war period of the 1950s and its freedom from wartime restrictions coupled with the promise of new opportunities and exciting new technologies to make the housewife's lot easier. With the enthusiastic support of the Strathcare management and staff, the residents of Strathaven, together with their sister homes Strathglen and Strathdevon, set about to create a 1950s living room made entirely from knitting, crocheting, weaving and stitching.

QUILT THE BLUES

Senior Momentum
'An exhibition of collective strength and life experiences' Quilt the Blues is the new health promotion and education undertaking planned by Senior Momentum and is linked to the national Beyond Blue initiative. The project involved setting up a network of small informal groups of older women who will meet together to sew and chat while making a series of blue quilts. The purpose of the project is to provide peer support by older women for older women. Working together on the quilts created an opportunity for women to recognise and utilize their strengths, share their life experiences and the challenges of later life, thereby

reducing the effects of social isolation. Members of Senior Momentum formed a pilot quilt making group during November and December 2004 at the Hobart Women's Health Centre to make the first blue quilt. The experience was utilised to mentor subsequent groups during 2005.



MATERIAL GIRL

Selections from the fifth Women Tasmania International Women's Day Art Competition
"2006 Theme - Four Seasons: Women and Life"
Always an annual favourite...The 2006 Material Girl Art Exhibition comprises works from the female artists who have been residing in Tasmania for twelve months prior to 3 March 2006. The aim of the exhibition is to promote contemporary Tasmanian female artists, celebrate the roles women play in our society and to celebrate International Women's Day. Entries selected by Tasmanian Regional Arts will tour regional areas of Tasmania April-November 2006.

EXOTICA

The NSW Quilting Guild Challenge -2004 'An annual favourite - Each year, Guild members are challenged to make a small quilt, 50cm x 70cm, for a suitcase exhibition which travels around NSW and interstate. Originally, the quilts travelled for 12 months but the demand has been so strong that each collection is now on the road for up to two years. Every year a theme is set and members may use whatever fabrics and techniques they wish. In 2004, 45 members of the Guild took up the challenge, using a wide variety of techniques and some unusual fabrics. The quilts range in style from traditional to contemporary. The Challenge is open to all Guild members and entry is free. Quilts may be made using any technique or material; however, they should conform to the definition of a quilt, i.e. three layers. Quiltmakers are to use the theme as an aid to design.

DIVINE BUILDINGS

Photography by Lloyd Wilday
'A beautiful exhibition of stunning buildings that is sure to lift your spirits'
Self taught photographer and father of five Lloyd Wilday from Ulverstone takes a close up look at the divine nature of religious buildings in Tasmania.





An Australian Government Initiative



ARTS ASSIST

THE REGIONAL ARTS FUND

The Regional Arts Fund is an Australian Government initiative supporting the arts in regional and remote Australia and delivered in Tasmania in partnership with Tasmanian Regional Arts. *Creative and innovative regional, rural and remote communities in which participation in and access to cultural activities contributes to the sustainable cultural, social and economic capacity and wellbeing of individuals and communities. (RAF Vision)*

TASMANIAN GRANT CATEGORIES

NEAR - New & Emerging Arts Recipients - up to \$1,000*

CARS - Community Activities Regional Support - up to \$2,000

SOAR - Skills Opportunities for Artists Regionally - up to \$3,000

ROADS - Regional Organisations Arts Development Scheme - up to \$10,000*

LINKS - Longer-term Incentives Nurturing Knowledge and Sustainability - \$20,000/2yrs*

Closing Dates: 17 March (for projects commencing 1 July 2006)

& 18 August 2006 (for projects commencing 1 January 2007)* March round only

2006 application forms will be available soon see TRA website: www.tasregionalarts.org.au

NEAR - Entry level funding to an emerging Indigenous or regionally isolated artist or organisation. The aim of NEAR is to introduce arts activity as a tool for community development in isolated communities.

- > Tasmanian artist / worker or organisation
- > No previous Regional Arts Fund assistance
- > Indigenous or regionally isolated (outside Hobart, Launceston, Devonport & Burnie)
- > Project must include benefits (economic or social for local community)
- > Artist / organisation must link with at least one community organisation (eg. school / CWA)

CARS - Seed funding to facilitate partnership development between arts and other community organisations at the local level. The aim of CARS is to support the needs of organisations that are regionally disadvantaged.

- > Community Organisation
- > Project must include benefits (economic or social for local community)
- > Artist / organisation must link with at least one community organisation (eg. school / CWA)

SOAR - Funding to an artist or organisation for SKILLS DEVELOPMENT activities. The aim of SOAR is to increase arts skills, dialogue, employment & professionalism.

- > Tasmanian artist / worker or organisation
- > Demonstrated other funding or support
- > Employ professional artists/ workers

ROADS - Advanced level funding to an established arts organisation for a significant ARTS PARTNERSHIPS project. The aim of ROADS is to inspire community engagement, develops partnership dialogue and capability and promote the benefits of arts partnerships for non-arts groups, organisations or agencies.

- > Arts organisation
- > Record of high level arts practice
- > Demonstrated other funding or support
- > Evidence of building on previous activity
- > Employ professional artists/ workers
- > High quality outputs for specific art forms
- > Develop & expand participation / attendance
- > Previous recipients must demonstrate the need for consolidation of previous work. These organisations will only be funded for a maximum of three years

LINKS - Funding of two years to an established regional arts organisation with a history of outstanding arts practice. The aim of LINKS is to encourage sustainable development, organisational capacity, governance and improved longer-term planning.

- > Arts organisation not on recurrent funding
- > Outstanding and innovative arts practice
- > Functioning board / executive committee
- > Received (and acquitted) previous RAF \$
- > \$ for \$ funding from local govt / other sources
- > Evidence of building on previous activity
- > Time-line for project, plan for future
- > Employ professional Tas artists/ workers
- > Develop a 3 year Business Plan

PROJECTS COMPLETED IN TASMANIA 2004 -2005

ARTS PARTNERSHIPS

Every Wrinkle Tells a Story

In partnership with Strathcare Nursing Homes, Kickstart Arts held music, theatre and writing workshops with older people resulting in the creation and reading of a first draft performance script. Older people were able to actively participate in professional art making. They were provided with the opportunity to share their stories, break the sense of social isolation and enhance their general health and wellbeing. 120 older people who live at home or in nursing homes worked with 600 young people to create an exciting and inspirational initiative. "Seeing older people act gives me the confidence to let the aging process take place. It gives me courage to grow old and shows me that age is no barrier in achieving and sharing" (participant).



Helga makes a phone call - image from Every Wrinkle Tells A Story, produced by Kickstart Arts Inc, July 2005
From left, Sara Cooper, Phil Pears, Bernard Marchant, John Peacock, Elizabeth Bowden & Annie Quarmby. Photo by Lucia Rossi

Circus Performance

A professional artistic and production team developed, directed and produced a theatre-style circus performance in November 2004 based on themes devised by Slipstream Circus participants. It was a great show, with 40 excited young and very talented young people performing to a full house every night. Their skill level was excellent and the professionalism of the show was evident throughout. Although it required lots of energy and effort, the end result, the "Showtime" extravaganza was spectacular.



SKILLS DEVELOPMENT

Clipping Maps Workshop

Tasmanian Regional Arts toured an Elena Gallegos exhibition of maps of Australia. In conjunction with the exhibition Elena ran textile workshops for Tasmanians to create their own maps. The participants were able to use their skills to translate their stories of being in Tasmania into artworks. They met with and shared stories with other community members some of whom are new to Tasmania and others who have been here for many years. Many of the maps were political in nature, focusing on the war in Iraq, environmentalism and Australia's attitude towards refugees. "We have an interesting collection of women's work that's cleverly and passionately mapping this island of Tasmania" Robyn Mathison.

Out of the Blue

Out of the Blue was a visual and sound collaboration based at the Blue Tie in the North East. It provided the artists with the opportunity to work together and draw inspiration from their local environment. Lorraine Biggs worked with painting and drawing mediums and Lila Meleisa worked on a musical exploration of the environment of the Blue Tier. The work ended up being exhibited a number of times, including at the Burnie Regional Art Gallery as an element of the Ten Days on the Island

PROJECTS FUNDED IN TASMANIA AUGUST 2005

Festival and at the Grafton Regional Arts gallery in NSW. A CD and booklet have also come out of this exciting and productive collaboration. "We have both really enjoyed this project and learned a lot. It has stretched us artistically so much we feel we would like to now build on this collaboration with more work" Lorraine Biggs

The Melbourne Affordable Art Fair 2004

A selected group of artists based in the Huon Valley and affiliated with the Tapir Print Workshop represented their work at the Melbourne Affordable Art Fair. This Fair provides an opportunity for artists to sell their art and increase their profile, educate visitors in art appreciation and create and encourage customer awareness. The group were able to develop their reputation, create market opportunities and establish sustainable networks for the artists involved.

COMMUNITY ACTIVITIES REGIONAL SUPPORT

South Channel Rate Payers - Scarecrow Building Day - \$800
 Launceston Festivale - La Pintura grande - \$1,200
 Aunty Phyllis Pitchford - Aboriginal youth writings - \$2,000
 Burnie Arts Council - Residency - Bec Rowe - \$2,000
 Anglicare - Art Opening Doors - \$2,000
 Clarence City Council - Mountain paintings - \$2,000
 Derwent Valley Reg Arts - Willow Court Theatre Production - \$2,000
 Zeehan Neighbourhood Centre - Wizard O' Zeehan Yellow Brick Road Project - \$2,000
 Interweave - Superstarters - \$1,980
 Dunalley Primary School - Postcard Alley - \$1,000
 Meander Valley Enterprise Centre - Ashley Youth Sculpture project - \$2,000
 Launceston Arts Council - Junk Jewellery Workshops - \$850
 Latrobe Council - Port Sorell Regatta - \$2,000
 Tas Classical Ballet - Regional Dance Workshops - \$2,000
 France to Freycinet - Drama-ties - \$2,000
 Circular Head Rural Health - Sculpting with Heart - \$1,000
 Bruny Is Arts Adventure - Arts Workshops - \$2,000
 Northern Suburbs Community Centre - Dover Street Mural Project - \$2,000

SKILLS OPPORTUNITIES FOR ARTISTS REGIONALLY

Martyn Coutts - Raw Space Residency - \$3,000
 John Swindells - Sudanese Stories - \$3,000
 Lila Meleisea - Southern Wind - Northern Edge - \$2,237.5
 Kay Janine Carney - Whale Back Island - book - \$1,191
 Tasmusic - Music Industry Festival - \$3,000
 Australian Script Centre - Scene Change - \$3,000
 Philip Kuruvita Photography - Faces of Launceston - \$2,000

HOW TO WRITE A GOOD APPLICATION

Whether you are applying to the Tasmanian Community Fund, TRA, Arts Tasmania, or any other organisation for funding, you need to know how to maximize the chances of your application being successful:

- > Do your research and get your information in order.
- > Be prepared, start getting support letters and organising your application early. This gives you plenty of time to talk to the grants officer, and iron out issues.
- > Read the guidelines and talk to someone before you start writing your application, grants come with conditions attached so make sure you are eligible before applying.
- > Projects that have already started are ineligible.

THE PANEL

- > Applications are assessed by a panel, they may have to read at least 50 applications per round.
- > Your application needs to stand out, be easy to read, and provide all the information necessary clearly and succinctly.
- > The role of the application is to show the panel that your project deserves to be funded.
- > Be informative, don't assume the panel will know what you are talking about.
- > Don't use acronyms, don't waffle, be clear and concise.

SUPPORT MATERIAL

- > Only include support material that enhances your application.
- > It should show evidence of a competent artist (artist CV)
- > Use support letters from the community or partners to make clear who the projects partners are and exactly what they are contributing. Not everyone is a partner, only those organisations that are providing actual money or specific in-kind support (venue, wine, food etc) or are jointly creating and producing the project.

LOOK PROFESSIONAL

- > Panels look favourably on applications that look professional, well thought out and well researched
- > Make sure your application is clear and stands out. Do this by using a clear font, no fancy headings/detail/borders etc, but good use of bullet points, and bold headings.
- > Check your application for typos,
- > Make sure you've answered all questions,
- > Have you attached all the support material.

Remember organisations want to be able to fund applicants, and they want good community projects to get off the ground.

HANDY TIPS AND THINGS TO REMEMBER WHEN WRITING YOUR APPLICATION

- > Sell your project, show clearly that it is a good project and why.
- > Don't bind your application (paper clip is best)
- > Provide hard copies if possible, not CD/DVDs

- > Don't submit important original documents
- > Make sure you have all the necessary support material
- > Talk to the grants officer before you send in an application, to ensure that you are eligible
- > Application forms are formatted for a reason, use the correct form and fill out all sections
- > Don't leave bits blank, common things to miss are postcode and ABN number
- > Don't assume the organisation has artists CVs etc on a database at their office
- > Write very clearly, or type if you have the form on your computer
- > Be as specific as possible, you need to take time over your application and be thorough, get the correct dates and show a clear project timeline
- > Double check you have filled out the budget correctly (does it add up?)

Check out the Arts Tasmania website for some more tips, and also grant opportunities. <http://www.arts.tas.gov.au/grants/guidelines.htm>

The NSW regional arts website is also useful http://www.regionalartsnsw.com.au/docs/grant_writing_guide_2003.pdf

In next tactics I will show you how to write a good acquittal, and tips to make it easier.

NETWORK NEWS

FELICITY HARRIS
GRANTS / ADMIN OFFICER

TYCC - YOUTH

All over the state, exciting things have been happening throughout our branches. As with all things, branches ebb and flow, with some groups newly forming, and some groups taking a breather, and others continuing on at a breakneck pace. What ever stage of life your branch is in, you are all integral to the network of TRA. Here is an overview of what been happening around the state, as another year comes to its end, and we beckon in a balmy summer. Lots of branches had a similar problem of finding it hard to get new blood to take on roles on their committee, although they have good membership. If you are a member of a branch and are keen to get more involved, please put your hand up to help out, and make sure your branch continues to run and remain viable. Those who have been on committees get really tired and need fresh enthusiasm to keep them going.

TRA - KENTISH

The newest baby on the block, TRAK reformed in the Sheffield region after a long break. Formed by a group of local artists, they have already developed an exciting working art space and gallery, teeming with artists and volunteers eager to see it be a success. The space allows local artists to promote their art and be supported by the community.

FAR SOUTH REGIONAL ARTS

As always Far South, has been a busy beaver, going about its usual community art business. The DVD for the Far South Island Life project is currently being printed. This was an enormous undertaking by the community, and has had a huge impact as the community has questioned who they are and the way they see themselves. The Recherche Baybes an all girl singing group from Far South has recently put out a CD, which will be available soon. Far South are putting together a Christmas banner for Dover streetscape and 6 Members of Far South held an exhibition at SideSpace gallery at Salamanca Art Centre, titled Extreme South.

GRASSY BOTTOM

The Garage, St Mary's community art space is slowly developing and taking shape, which will be a great space for holding workshops and art events. The annual winter solstice event was once again very successful, as was the Beltaine spring maypole festival, as a celebration of spring. Everyone danced the maypole dance, and other activities were held. Grassy Bottom held a very successful orienteering fundraiser, catering for the event. Lots of touring exhibitions and shows contributed to a busy year. Grassy Bottom artists also received a grant to paint a mural over a huge tent, which is still in production, but will look amazing when it is finished.

ARTS DELORAINE

Apart from a fantastic and very time consuming hosting of the Real Event TRA State Conference it was another busy year for Arts Deloraine with a range of activities. A Crowd Of Bold Sharemen as part of Ten Days On The Island was very successful as was Tarts for Arts which now looks like being an annual event. The Call My Bluff Project is now taking off with money from the Community Fund. Arts Deloraine continues to work closely with the Meander Council, who have just taken on the Arts Deloraine inspired Community Events Calendar. The Council have also strongly supported SuperSillyus and The Suitcase Circus who look to be rehoused at the Deloraine Community Centre along with the Band, the Dramatic Society and other performing arts groups. SuperSillyus recently supported Tasdance on their Hard Yakka tour at the ever successful Deloraine Craft fair.

ARTSCAPE WEST TAMAR - EXETER

Artscape has a very successful community art workshop space at Exeter at the community centre, called Tresca. The group is famous for its art workshops, holding drawing and water colour classes over the year, and hoping to start an oil painting class next year. There numbers are increasing with the success of the classes.

BURNIE ARTS COUNCIL

Burnie Arts Council is always busy, and 2005 was another successful year. One of the highlights of the year was the Tasdance, *Hard Yakka* show held in the rhododendron gardens, with the rhodo's in full bloom and the Burnie Youth Choir supporting on the night. It was a gamble because of the weather, but it turned out to be a perfect night. The strength of the event was not only the quality of the performance, but also the partnerships and support from the wider community.

BRUNY ISLAND ARTS ADVENTURE

Its been another busy year for Bruny Island, starting with their Kids Artzone Festival, which had a sea dragon theme this year, and attracted 1400 participants. Other events include their annual *Artists from the Island* exhibition at Easter, lighting and sound technical workshops, whale pod sculpture by Matt Carney, singing for fun workshops and artists trail for living artists week.

CIRCULAR HEADS REGIONAL ARTS

Circular Head hosted two amazing shows, TasDance *Hard Yakka* and the Sydney Male Choir, which attracted huge crowds. 4 CHARTS members attended the Real Event Conference, and felt it was a great opportunity for networking. A community art program and mural have been started with schools and the general community involved. Circular Head is also getting more involved with the Arts and Health workshops, which provided a diverse range of women to engage health issues in new ways, this has led to further projects in rural health.

CYGNET REGIONAL ARTS

Cygnets Arts Council has had a big year, with heaps of colourful local events to keep us entertained and inspired. Our winter solstice celebration was particularly spectacular this year thanks to the efforts of local artists and the support of Tas Regional Arts, which enabled us to run community lantern making workshops. As well as continuing our cinematic traditions of Cinema Cygnets and the Bollywood Film Festival, we also had our first International Film Festival, which was a great success and saw a big growth in membership. Circus also seems to be blossoming in Cygnets, with much inspiration from the Tasmanian Circus Festival, with two circus workshops held in the last 6 months and plans afoot for more. Other highlights of the year include a Roller Disco, Dance and Drama for under 5's, the Cygnets Market and last but not least, Tasdance coming to town with *Hard Yakka* and dance workshops. All in all another fantastic year.

DERWENT VALLEY REGIONAL ARTS

Derwent Valley has set up some Regional Arts rooms at Willow Court in New Norfolk, which provides a focal point for the branch. Derwent Valley has held a number of circus workshops with children. A number of schools participated and the children worked very hard. The Sydney Male Choir wowed audiences, got a great response and was very successful. At the end of the year, Derwent Valley is hoping to hold a market at the Christmas parade, with very affordable art work available for sale.

EAST DERWENT REGIONAL ARTS

There has been a redevelopment of the East Derwent branch this year, with a rethink of the direction of the branch. There is a focus on having a more active involvement with partnerships, especially with the state government and networking with other art groups. There have been creative writing workshops, a play reading (under Milkwood) and the Super Circles quilt show. In 2006, there is planning with many community groups to support the development of an ephemeral cultural walk following a historic route along the rivulet at East Derwent.

FLINDERS ISLAND REGIONAL ARTS

This year has been a busy on Flinders Island starting with in January Sand sculpting day at Trousers Point organised by Jude Reid with about 70 people attending. In April the workshops for the Ten Days on the Island Festival weren't terribly successful in numbers but those who did attend got a lot out of their time with *Seaman Dan*. In August the Kite making and flying day at the school involved both children and adults. We had about 60 people attend what was a fantastic performance by Sunwrae at the Whitemark hall and we also held a workshop.

The Moonbird Festival at Lady Barron in October was a major event organised by Jon Hizzard and a few others involving the school kids and visiting artists. It was a celebration of the return of the Mutton Bird (Short Tailed Shearwater) from its annual migration north to the arctic circle and the places it visits along the way. The festival culminated with a

fantastic music, dance and puppetry performance. About 200 people attended the day.

Other ongoing events include the local market held about every 3 months. This is now run by the local Lions club however we have had displays of what the local branch have been doing. There have also been several events organised by the local craft association these include a cartooning workshop and scrap book workshop organised by Jude Reid.

GREAT OYSTER BAY REGIONAL ARTS

An exciting arts and health initiative has been happening in Swansea since May. Two tap dance classes have been running, an adults' class and a children's class. Everyone loves it and are getting a lot out of it. As part of the annual Swansea revue, both classes performed, and enjoyed the experience of being in front of a crowd. The tap dance classes are working on something new for St Patrick's Day! Tansdance was also successful in Swansea, with people having to be turned away from a packed house in the Town Hall!

GREATER GREEN PONDS REGIONAL ARTS

Greater Green Ponds hosted The Concert by The Business, although it was an excellent show and incredibly funny, there was a poor turn out. So a lot of people unfortunately missed out on a great show. But to make up for it the Tansdance *Hard Yakka* show, held at Chauncey Vale was very successful, helped by being very lucky with great weather. Greater Green Ponds is hoping to revive the Kempton Festival to be held in February 2006 and are organizing the

entertainment program. If any other branches have an idea about content for the festival, please get in touch.

KING ISLAND REGIONAL ARTS

King Island Regional Arts has a strong focus on theatre and performing. Every year the group puts on a production to perform on the long weekend in March. Almost all 50 odd members are involved in the productions in one way or another. Rehearsals have started for the 2006 production which is to be *The Real Story of Puss in Boots*. Sunwrae, a contemporary music ensemble performed to a packed house on King Island and was really successful.

LAUNCESTON REGIONAL ARTS

Watercolor artists have held two exhibitions at Rostan Gallery at Travellers' Rest. The Artsroar annual Big Chair challenge was held at the end of November. Launceston is continuing their relationship with Interweave and the Carpark cinema. In February, Launceston Regional Arts will be involved with Festivale, they are looking for people to get involved with 'la pintura grande', a calico art wall with artist Sandra Lancaster. This year has been one of working collaboratively with and developing new partnerships, especially in the area of art and disability.

LEVEN REGIONAL ARTS

Leven Branch once again took on the task of showcasing the artists and crafts people of the Central Coast Municipality through its third "Windows on the Arts" event. For the duration of Living Artists Week over 60 artists and crafts people

were able to exhibit their work in shop front windows in the main business area of Ulverstone. The community response was fantastic, many positive comments were received and more businesses have asked to be included in the future. Many works were for sale, though the prime focus was to celebrate the diverse range of creative productivity in our region and to share the work especially emerging artists with the public.

LIGHTHOUSE REGIONAL ARTS

Lighthouse hosted a very successful exhibition of *Super Circles*, from the Quilters Guild of NSW. It was held at the Georgetown Watchhouse in July. There was a tremendous response to the exhibition with people travelling from Launceston to see the quilts. The official opening gave Lighthouse a chance to talk about their branch and the role of TRA and encourage new members. Lighthouse hopes to make this an annual event because it was so popular. Lighthouse wants to take this opportunity to say thank you to their excellent hard working committee, who are doing an excellent job.

LILYDALE'S REGIONAL ARTS

Lilydale most exciting project was the winter solstice. Workshops were held with the children to make lanterns, and then there was a lantern walk through the main street, with the brightly lit creations. All the trees in the main street were decorated with candles and then everyone sat around a campfire, and had hot chocolate and marshmallows, over 200 community members turned up to this very special event.

MACQUARIE REGIONAL ARTS

Macquarie held their inaugural annual W.H. Tofft art award in September. They had about 50 entrants, with a first prize of \$1000, \$500 youth award, and \$500 people's choice award. On the back of this successful exhibition was the very successful Sydney Male Choir, who entertained the crowd and everyone had a great time. It was the talk of the town for days.

MERSEY REGIONAL ARTS

Devonport has been teeming with jazz this year, with Mersey hosting 3 jazz performances. Including jazz at Tranquilles in Port Sorell and a jazz night at the Devonport Gallery, this received a great response. Devonport is home of the famous jazz festival, which was held in July.

NORTH EAST REGIONAL ARTS

Due to a lack of committee members, NERA has downscaled their activities this year. Hosted a tap-dance performance at Bridport at November. However, individual members have still been active artistically, there have been lots of gallery openings, and individual communities have been busy in their own areas. Ringarooma held a Festival of Voices workshop and concert. There is now an Art gallery at the miners Rest in Derby, and a working art gallery and exhibition space at The Bank House Manor. A really exciting and unusual partnership between the Dorset council and NERA has resulted in A Flush of Art. A project to paint public toilet blocks around the North-East, starting in Scotsdale. A community artist will

be employed, and will work with the community to create interesting and eye catching art work, which will be a hit with the tourist crowd.

OUT ON A LIMB REGIONAL ARTS

An unusual and very successful series of workshops was held over the year, making ukuleles with an instrument maker. Workshops are a great opportunity to spread skills through out the community. Other events have included a wonderful tsunami benefit concert. Music is very strong on the peninsula and there have been lots of musical activities that reflect this. An artists Tasman trail was held during living artists week, which supported the visual artists on the peninsula. Out on a Limb, is thinking big, with a concert to be held in January, which may end up becoming a world music festival in the coming years, so keep your ear out!

SOUTHERN BEACHES REGIONAL ARTS

All year a group of SBRA members have taken life drawing classes and are increasing their skills. After a very successful TasDance show, Nick, the President stood up and gave a little speech about the branch, which attracted some new members to the branch. This is a great way to remind people about your branch and encourage new members. In the New Year, Southern Beaches is hoping to negotiate with the Sorrel Council to paint a mural on the library wall.

WEST COAST REGIONAL ARTS

West Coast has started running arts classes in learning to draw and paint,

with an artist who has newly moved to Rosebery. An art exhibition of work from the classes was very popular, and boosted the self-esteem of many of the participants to see their work on display. The Branch held children's activities during the Mining Open Day in Rosebery, including badge making, face painting and art work with the kids. The branch is starting to get a profile in the town and people are starting to know who we are. West Coast Regional Arts wishes everyone a happy Christmas, and a great summer.

WINDMILL VILLAGE ARTS

This branch was only started in March of this year, so is still very new and gaining momentum. So far they have held textile and felting workshops. Members have attended arts and health workshops and are extremely excited about the possibilities of working in this area, especially with the local Midlands Multipurpose Health Centre and Oatlands Community House. Windmill Village Arts organised an exhibition of work by local artists as part of the Oatlands Open Day, visitors and locals alike were thrilled with the quality of the work.